

**SUPERIOR PERFORMANCE
EXTREME RESULTS**



CAFFRIGTM
PERFORMANCE

THE GAFFRIG STORY...

In 1984, James Gaffrig, a long time family friend and my father's partner on the Chicago Police force for more than 10 years, left the force armed with a talent for building quality, marine-capable speedometers and gauges, and the ambition to turn this talent into one of the most respected businesses in the boating industry.

I began working with Jimmy when he opened his first shop in Chicago in 1984. It was here that he began manufacturing what are still known today to be the best gauges in the trade. Shortly after bringing these gauges to the forefront of the industry, Jimmy began engineering a series of Gaffrig mufflers, silencers, flame arrestors and throttle brackets. Soon, like Gaffrig gauges, these products proved to the boating industry that Gaffrig was synonymous with quality. For several years I worked closely with Jimmy, building the business through personal dedication and quality craftsmanship surpassed by no one.

Sadly, in 1992, my friend and mentor, James Gaffrig, passed away. I purchased the business shortly thereafter and continue to strive each day to operate and expand the Gaffrig line with the same passion set forth by James Gaffrig so many years ago.

Our commitment in 1984 remains the same to this day...to be the best manufacturer of boating accessories, providing the serious performance boater with unsurpassed quality, performance, innovation and service. I am dedicated to continuously researching new product ideas, as well as ways to improve Gaffrig's current product line. Most importantly, I listen to the feedback of you, my customers. You are vital to the growth of this company and I encourage you to continue challenging me with your ideas and suggestions.

Have a great boating season!

Mike Schultz
President



Alarms	.46
Battery Box	.43
Bezels - Gauges	.30
Bezels - Cleats	.45
Bezels - Pop-up Lights	.46
Bezels - Throttle	.39
Boots	.29
Brackets	.43
Breather Tubes	.35-36
Cable Connection Kits	.40
Cables	.40
Cleats & Cleat Bezels	.45
Controls	.37-40
Deck Mounts	.46
Depth Sounders	.28
Docking Cleats and Bezels	.45
Drink Holders	.44
Engine Vents	.44
Fire Extinguishers & Mounts	.43
Fittings-Gauge	.31-32
Flame Arrestors	.35-36

Gauges	
Racing Series 2 5/8"	.13-18
Waterproof 2"	.19-24
270 Degree Sweep	.25-26
International	.21
GPS Speedometers	.15-7
Grab Handles	.44
Hoses	.31-32
Lights	.46
Mechanical Indicators	.47
Muffler Accessories	.34
Mufflers	.33-34
Neutral Safety Switch	.40
Outdrive Coolers	.48
Pitot Mount Assemblies	.31-32
Pyrometers	.27
Receivers	.8
Rims	.30
Rubber Boots	.29
Senders	.29
Silencers - Powertip	.33

Speedometers	
Dry Speedometer 3 3/8"	.9
GPS Waterproof 4 5/8"	.1-2
GPS Waterproof 3 3/8"	.5-6
GPS Digital	.7
International	.8
Liquid Filled	.10
Steering Wheels	.41-42
Switches	.48
Switch Plate-GPS Recall	.8
Tachometers	
Waterproof 4 5/8"	.3-4
Waterproof 3 3/8"	.11-12
Tach/Hour Meters	.11-12
Throttle Brackets & Clips	.43
Throttle Controls	.37-40
Throttle Pod	.39
Thru-Hull Fittings	.40
Toggle Switch	.8, 48
Trim Panels	.47
Warning Systems	.46

TERMS & CONDITIONS

PRICES: All prices subject to change without notice.

SHIPPING: All orders shipped UPS Ground unless otherwise specified (Next Day, 2nd Day Air or 3 Day Select).

TERMS: COD – Certified Check, Visa or Mastercard.

There is a 2.5% service charge for all credit card payments.

You may prepay with a business or personal check, however there will be a 5 day check clearance delay prior to shipping your order.

Dealers and OEM's may apply for NET 30 status.

RETURNS: No returned items accepted for credit or exchange without written authorization. Freight must be prepaid and copy of invoice included. All returns subject to 15% handling charge – more if damaged or incomplete.

SPECIAL ORDERS: 25% deposit required on all special orders. No returns or refunds on special orders.

CLAIMS: All claims for incorrect or incomplete shipments must be made within 24 hours of receipt of shipment for adjustment consideration. Claims for damage must be made directly with carrier. Do not return damaged goods.

DEALER/OEM: Dealer and OEM inquiries are welcome.

WARRANTY: All Gaffrig products carry a One-Year Warranty for repair or replacement. All Gaffrig products are warranted to be free of defects in material and workmanship at time of delivery. Gaffrig will in no way be liable for more than cost of original product and in no event will Gaffrig be liable for special, indirect or consequential damages of any kind whatsoever.

Users/Customers of Gaffrig products agree not to hold Gaffrig responsible for any damages occurred by improper installation or use of any Gaffrig products.

Gaffrig™ is a trademark of Gaffrig™ Performance Industries, Inc.

We gladly accept Visa® and MasterCard™



GPS 4 5/8" SPEEDOMETERS ANALOG

WATERPROOF and FOGPROOF GPS SPEEDOMETER.
Only at Gaffrig!

Gaffrig was one of the first manufacturers to bring you the GPS Speedometer. Now, once again, we are leading the industry bringing you our newest water-proof and fogproof GPS Speedometer.

Gaffrig now offers a new standard of quality never before available to the marine industry. Any serious high performance boater will confirm that the GAFFRIG name is synonymous with quality. Our reputation is hard earned.

Offshore racers and high performance marine enthusiasts who demand only the finest products consistently choose GAFFRIG. All Gaffrig products are hand assembled, calibrated and tested. Our products meet the exacting demands of the **military, U.S. Customs, and U.S. Coast Guard.**

GPS SPEEDOMETERS

GPS Controlled speedometers utilize state of the art satellite guidance to achieve unsurpassed accuracy with no needle bounce.

Purchase as a kit and have everything you need to get your GPS up and running in no time.

Kit includes: Speedo Head, Gaffrig receiver, toggle switch, recall switch plate and rubber boot.

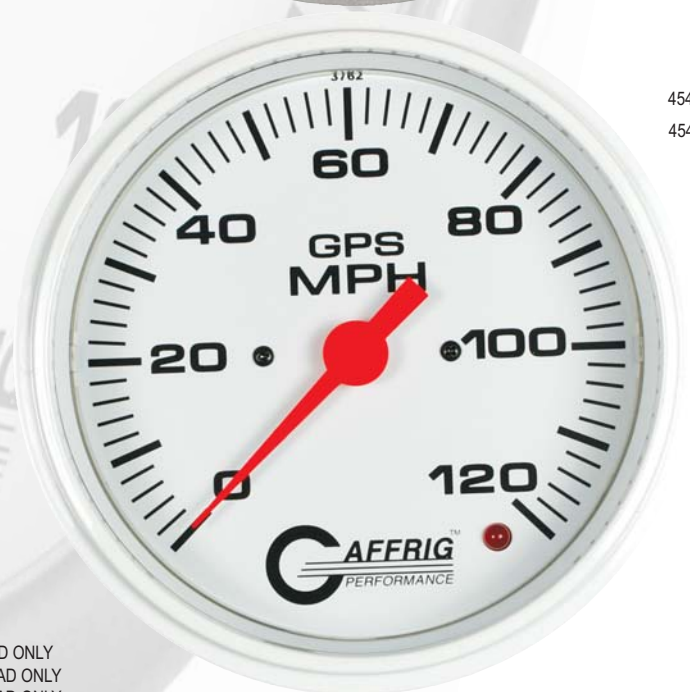
- Exceptional lighting achieved utilizing two bulbs with our custom light guide to evenly disperse light throughout the gauge.
- Matching flourescent, UV protected pointers and larger, bolder fonts on every gauge provide a consistent appearance.
- Waterproof and fogproof.
- Terminal studs for easy installation.
- 4 5/8" cutout.
- No pitot tube required
- High speed memory recall
- Gauge comes standard with step rim. Can be upgraded to fat rim with additional color choices. See page 2.



4548 Kit
4547 Head Only



4052 Kit
4051 Head Only



4544 Kit
4543 Head Only

GPS SPEEDOMETER KITS

CARBON			DESCRIPTION
PLATINUM	FIBER	WHITE	
4548	4048	4542	4 5/8 GPS ANALOG 90 MPH SPEEDOMETER KIT
4550	4050	4544	4 5/8 GPS ANALOG 120 MPH SPEEDOMETER KIT
4552	4052	4546	4 5/8 GPS ANALOG 180 MPH SPEEDOMETER KIT

GPS SPEEDOMETER HEAD ONLY

CARBON			DESCRIPTION
PLATINUM	FIBER	WHITE	
4547	4047	4541	4 5/8 GPS ANALOG 90 MPH SPEEDOMETER HEAD ONLY
4549	4049	4543	4 5/8 GPS ANALOG 120 MPH SPEEDOMETER HEAD ONLY
4551	4051	4545	4 5/8 GPS ANALOG 180 MPH SPEEDOMETER HEAD ONLY



4548 Kit
4547 Head Only
Shown with 458-08 Fat Rim



4544 Kit
4543 Head Only
Shown with 458-01 Fat Rim



4052 Kit
4051 Head Only
Shown with 458-02 Fat Rim

FAT Rims

Get the new Gafrig FAT Rims - made specifically for our Racing Series. Mix and match the 2 5/8", 4 5/8" and 3 3/8" gauge lines for a consistent, HOT looking dash! (Fat Rim not available for digital GPS)

Available in a variety of UV protected, metallic powder-coated and chrome colors to compliment your boat's interior.

PART#	DESCRIPTION
458	GAUGE RIM FAT 4 5/8" DIAMETER

Add Color Code to Part# above: 01 - Blue, 02 - Red, 03 - Teal, 04 - Purple, 05 - Black, 06 - Yellow, 07 - White, 08 - Chrome, 09 - Gold, 10 - Platinum

GPS Speedo Kits

include:

Speedo Head, Gafrig receiver, toggle switch, recall switch plate and rubber boot.



4 5/8" TACHOMETERS Electric

WATERPROOF and FOGPROOF TACHOMETERS.
Only at Gaffrig!

- Dip switch for 4, 6 and 8 cylinder and outboards.
- Tachometers come pre-set for use with an 8 cylinder. You may need to adjust dip switch to match your application.
- Exceptional 12-volt red-orange lighting achieved utilizing two bulbs with our custom light guide to evenly disperse light throughout the gauge.
- Matching fluorescent, UV protected pointers and larger, bolder fonts on every gauge provide a consistent appearance.
- Waterproof and fogproof.
- Terminal studs for easy installation.
- 4 5/8" cutout.
- Gauge comes standard with step rim. Can be upgraded to fat rim with additional color choices. See page 4.



4 5/8" TACHOMETERS

PLATINUM	WHITE	CARBON FIBER	DESCRIPTION
10018	10019	10020	4 5/8 ELECTRIC TACHOMETER 0-8000 RPM
10021	10022	10023	4 5/8 ELECTRIC TACHOMETER 0-12000 RPM

10019
Shown with 458-04



10023
Shown with 458-10



10018
Shown with 458-06



FAT Rims

Get the new Gaffrig FAT Rims - made specifically for our Racing Series. Mix and match the 2 5/8", 4 5/8" and 3 3/8" gauge lines for a consistent, HOT looking dash!(Fat Rim not available for digital GPS)

PART#	DESCRIPTION
458	GAUGE RIM FAT 4 5/8" DIAMETER

Add Color Code to Part# above: 01 - Blue, 02 - Red, 03 - Teal, 04 - Purple, 05 - Black, 06 - Yellow, 07 - White, 08 - Chrome, 09 - Gold, 10 - Platinum

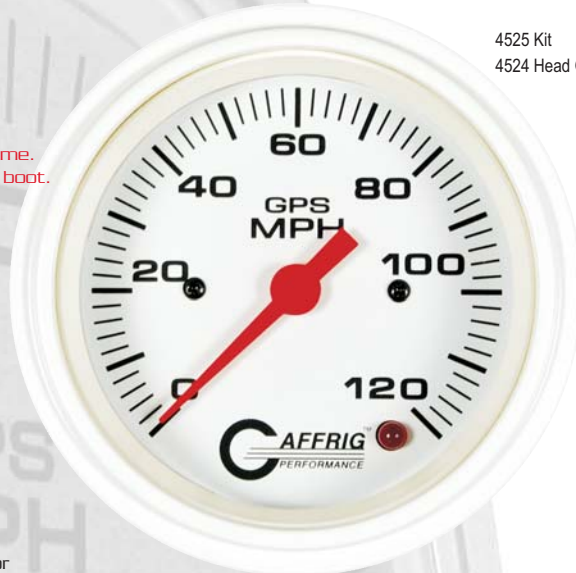
GPS 3 3/8" SPEEDOMETERS ANALOG

WATERPROOF and FOGPROOF GPS SPEEDOMETER. **Only at Gaffrig!**

GPS Controlled speedometers utilize state of the art satellite guidance to achieve unsurpassed accuracy with no needle bounce.

Purchase as a kit and have everything you need to get your GPS up and running in no time.
Kit includes: Speedo Head, Gaffrig receiver, toggle switch, recall switch plate and rubber boot.

4525 Kit
4524 Head Only



- Exceptional lighting achieved utilizing our custom light guide to evenly disperse light throughout the gauge.
- Matching flourescent, UV protected pointers and larger bolder fonts on every gauge provide a consistent appearance.
- Waterproof and fogproof.
- Terminal studs for easy installation.
- 3 3/8" cutout.
- No pitot tube required
- High speed memory recall
- Gauge comes standard with step rim. Upgrade your step rim with additional color choices or select the Fat Rim to match with our 2 5/8" Racing Series gauges.

NEW & IMPROVED!



4023 Kit
4022 Head Only



4556 Kit
4555 Head Only



4058 Kit
4057 Head Only

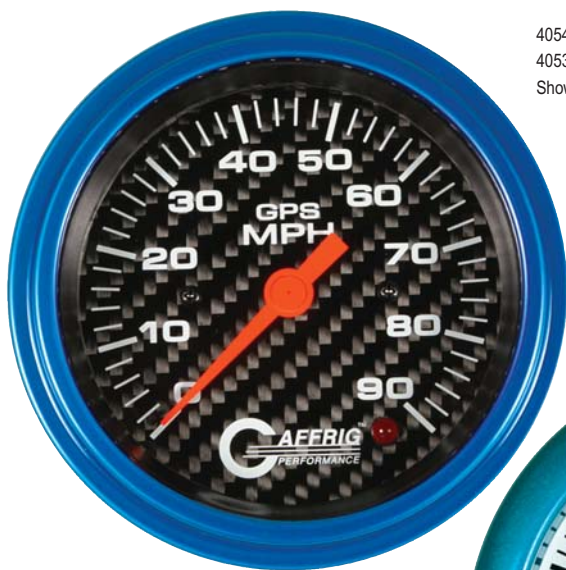
GPS SPEEDOMETER KITS

CARBON				DESCRIPTION
PLATINUM	FIBER	WHITE	BLACK	
4554	4054	4523	4023	3 3/8 GPS ANALOG 90 MPH SPEEDOMETER KIT
4556	4056	4525	4025	3 3/8 GPS ANALOG 120 MPH SPEEDOMETER KIT
4558	4058	4517	4029	3 3/8 GPS ANALOG 160 MPH SPEEDOMETER KIT

GPS SPEEDOMETER HEAD ONLY

CARBON				DESCRIPTION
PLATINUM	FIBER	WHITE	BLACK	
4553	4053	4522	4022	3 3/8 GPS ANALOG 90 MPH SPEEDOMETER HEAD ONLY
4555	4055	4524	4024	3 3/8 GPS ANALOG 120 MPH SPEEDOMETER HEAD ONLY
4557	4057	4516	4027	3 3/8 GPS ANALOG 160 MPH SPEEDOMETER HEAD ONLY

...CONT. **Add COLORED RIMS**



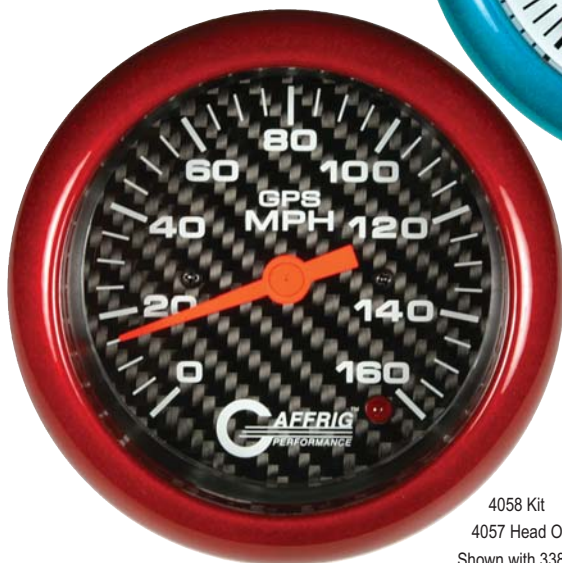
4054 Kit
4053 Head Only
Shown with 8-01 Step Rim



4556 Kit
4555 Head Only
Shown with 8-08 Step Rim



4525 Kit
4524 Head Only
Shown with 338-03 Fat Rim



4058 Kit
4057 Head Only
Shown with 338-02 Fat Rim



4554 Kit
4553 Head Only
Shown w/ 338-08 Fat Rim

FAT Rims

Get the new Gafrig FAT Rims - made specifically for our Racing Series. Mix and match the 2 5/8", 4 5/8" and 3 3/8" gauge lines for a consistent, HOT looking dash! (Fat Rim not available for digital GPS)

PART# DESCRIPTION

338 GAUGE RIM FAT 3 3/8" DIAMETER

*Add Color Code to Part# above: 01 - Blue, 02 - Red, 03 - Teal, 04 - Purple, 05 - Black, 06 - Yellow, 07 - White, 08 - Chrome, 09 - Gold, 10 - Platinum

Step Rims

PART# DESCRIPTION

8 GAUGE RIM STEP 3 3/8" DIAMETER

*Add Color Code to Part# above: 01 - Blue, 02 - Red, 03 - Teal, 04 - Purple, 05 - Black, 06 - Yellow, 07 - White, 08 - Chrome, 09 - Gold, 10 - Platinum

GPS Speedo Kits include:

Speedo Head, Gafrig receiver, toggle switch, recall switch plate and rubber boot.



GPS 3 3/8" SPEEDOMETERS DIGITAL

GPS DIGITAL SPEEDOMETERS

GPS Controlled speedometers utilize state of the art satellite guidance to achieve unsurpassed accuracy.

*Purchase as a kit and have everything you need to get your GPS up and running in no time.
Kit includes: Speedo Head, Gaffrig receiver, toggle switch, recall switch plate and rubber boot.*

- **SPECIAL FEATURES:** By utilizing the toggle switch you can alternate to different modes such as: MPH, Knots, Digital compass, Tachometer and Volts.
- Epoxy encapsulated to protect from harmful vibrations and harsh saltwater elements.
- Front sealed
- 3 3/8" cutout.
- No pitot tube required
- High speed memory recall

4021-06 KIT
4020-06 HEAD ONLY



4521 KIT
4520 HEAD ONLY



4521-10 KIT
4520-10 HEAD ONLY



4021 KIT
4020 HEAD ONLY

GPS DIGITAL SPEEDOMETER KITS

WHITE	BLACK	DESCRIPTION
4521	4021	3 3/8 GPS DIGITAL 200 MPH SPEEDO KIT
4521-01	4021-01	3 3/8 GPS DIGITAL 200 MPH SPEEDO KIT-BLUE RIM
4521-02	4021-02	3 3/8 GPS DIGITAL 200 MPH SPEEDO KIT-RED RIM
4521-03	4021-03	3 3/8 GPS DIGITAL 200 MPH SPEEDO KIT-TEAL RIM
4521-04	4021-04	3 3/8 GPS DIGITAL 200 MPH SPEEDO KIT-PURPLE RIM
4521-05	4021	3 3/8 GPS DIGITAL 200 MPH SPEEDO KIT-BLACK RIM
4521-06	4021-06	3 3/8 GPS DIGITAL 200 MPH SPEEDO KIT-YELLOW RIM
4521	4021-07	3 3/8 GPS DIGITAL 200 MPH SPEEDO KIT-WHITE RIM
4521-08	4021-08	3 3/8 GPS DIGITAL 200 MPH SPEEDO KIT-CHROME RIM
4521-09	4021-09	3 3/8 GPS DIGITAL 200 MPH SPEEDO KIT-GOLD RIM
4521-10	4021-10	3 3/8 GPS DIGITAL 200 MPH SPEEDO KIT-PLATINUM RIM

GPS DIGITAL SPEEDOMETER HEAD ONLY

WHITE	BLACK	DESCRIPTION
4520	4020	3 3/8 GPS DIGITAL 200 MPH SPEEDO HEAD ONLY
4520-01	4020-01	3 3/8 GPS DIGITAL 200 MPH SPEEDO HEAD ONLY-BLUE RIM
4520-02	4020-02	3 3/8 GPS DIGITAL 200 MPH SPEEDO HEAD ONLY-RED RIM
4520-03	4020-03	3 3/8 GPS DIGITAL 200 MPH SPEEDO HEAD ONLY-TEAL RIM
4520-04	4020-04	3 3/8 GPS DIGITAL 200 MPH SPEEDO HEAD ONLY-PURPLE RIM
4520-05	4020	3 3/8 GPS DIGITAL 200 MPH SPEEDO HEAD ONLY-BLACK RIM
4520-06	4020-06	3 3/8 GPS DIGITAL 200 MPH SPEEDO HEAD ONLY-YELLOW RIM
4520	4020-07	3 3/8 GPS DIGITAL 200 MPH SPEEDO HEAD ONLY-WHITE RIM
4520-08	4020-08	3 3/8 GPS DIGITAL 200 MPH SPEEDO HEAD ONLY-CHROME RIM
4520-09	4020-09	3 3/8 GPS DIGITAL 200 MPH SPEEDO HEAD ONLY-GOLD RIM
4520-10	4020-10	3 3/8 GPS DIGITAL 200 MPH SPEEDO HEAD ONLY-PLATINUM RIM



4521-01 KIT
4520-01 HEAD ONLY

INTERNATIONAL SPEEDOMETER

3 3/8" DRY MECHANICAL

- International speedometer is incremented in knots.
- Every speedometer kit includes stainless pickup assembly, hose & fittings.
- 12-volt red-orange light and mounting bracket.
- Matching flourescent, UV protected pointers
- Bolder fonts on every gauge provide a consistent appearance.
- Completely waterproof with new anti-fog lens that eliminate the possibility of water damage and fogging.
- Dry Mechanical speedometers have gauge rims and decorative bezels offered in a variety of UV protected, metallic powder coated colors to compliment your boat's interior.
- 3 3/8" Cutout

PART # DESCRIPTION

5860 3 3/8" MECHANICAL DRY SPEEDOMETER 70 KNOTS WHITE
7047 KIT FOR DRY SPEEDOMETER

**See page 21 for additional 2" International gauges*



5860

GPS ACCESSORIES

GPS Speedo Kits

include:

Speedo Head, Gaffrig receiver, toggle switch, recall switch plate and rubber boot.



PART # ACCESSORIES DESCRIPTION

BLACK	WHITE	
9250	9251	GPS RECEIVER
9400	9401	RUBBER BOOT FOR TOGGLE SWITCH
N/A	9403	GPS RECALL SWITCH PLATE

9300 TOGGLE SWITCH MOMENTARY ON/OFF SINGLE POLE (FOR MEMORY RECALL)

9400

9401

9300



9403

9251

9250

DRY SPEEDOMETERS

Mechanical

3 3/8" DRY MECHANICAL

- Every speedometer kit includes stainless pickup assembly, hose & fittings.
- 12-volt red-orange light and mounting bracket.
- Matching fluorescent, UV protected pointers
- Bolder fonts on every gauge provide a consistent appearance.
- Completely waterproof with new anti-fog lens that eliminate the possibility of water damage and fogging.
- Gauge comes standard with step rim. Upgrade your step rim with additional color choices or select the Fat Rim to match with our 2 5/8" Racing Series gauges.
- 3 3/8" Cutout

**Don't forget
the *RIMS* and
BEZELS!**
Page 30



4536 KIT
4500 HEAD ONLY



4038 KIT
4002 HEAD ONLY



4539 KIT
4505 HEAD ONLY



4532 KIT
4512 HEAD ONLY
Shown with 8-04 Step Rim



4534 KIT
4514 HEAD ONLY
Shown with 8-10 Step Rim



4527 KIT
4507 HEAD ONLY
Shown with 338-08 Fat Rim



4528 KIT
4508 HEAD ONLY
Shown with 338-05 Fat Rim



4030 KIT
4010 HEAD ONLY
Shown with 338-01 Fat Rim

3 3/8" MECHANICAL SPEEDOMETER KITS

PLATINUM	WHITE	BLACK	DESCRIPTION
N/A	4536	4036	3 3/8" MECHANICAL DRY SPEEDO 45 MPH KIT
N/A	4538	4038	3 3/8" MECHANICAL DRY SPEEDO 60 MPH KIT
4539	4540	4040	3 3/8" MECHANICAL DRY SPEEDO 80 MPH KIT
4527	4526	4026	3 3/8" MECHANICAL DRY SPEEDO 100 MPH KIT
N/A	4528	4028	3 3/8" MECHANICAL DRY SPEEDO 120 MPH KIT
N/A	4530	4030	3 3/8" MECHANICAL DRY SPEEDO 140 MPH KIT
N/A	4532	4032	3 3/8" MECHANICAL DRY SPEEDO 160 MPH KIT
N/A	4534	4034	3 3/8" MECHANICAL DRY SPEEDO 200 MPH KIT

3 3/8" MECHANICAL SPEEDOMETER HEAD ONLY

PLATINUM	WHITE	BLACK	DESCRIPTION
N/A	4500	4000	3 3/8" MECHANICAL DRY SPEEDO 45 MPH HEAD ONLY
N/A	4502	4002	3 3/8" MECHANICAL DRY SPEEDO 60 MPH HEAD ONLY
4505	4504	4004	3 3/8" MECHANICAL DRY SPEEDO 80 MPH HEAD ONLY
4507	4506	4006	3 3/8" MECHANICAL DRY SPEEDO 100 MPH HEAD ONLY
N/A	4508	4008	3 3/8" MECHANICAL DRY SPEEDO 120 MPH HEAD ONLY
N/A	4510	4010	3 3/8" MECHANICAL DRY SPEEDO 140 MPH HEAD ONLY
N/A	4512	4012	3 3/8" MECHANICAL DRY SPEEDO 160 MPH HEAD ONLY
N/A	4514	4014	3 3/8" MECHANICAL DRY SPEEDO 200 MPH HEAD ONLY

Liquid Filled SPEEDOMETERS

Liquid Filled 3 3/4" & 4 3/4"

Every speedometer kit includes stainless pickup assembly, hose, fittings and 12-volt red-orange light and mounting bracket. Matching fluorescent, UV protected pointers and larger, bolder fonts on every gauge provide a consistent appearance. Liquid filled to prevent pointer bounce.



HEADKIT3 3/4" DESCRIPTION

430043203 3/4"	80 MPH LIQUID FILLED SPEEDOMETER BLACK
480048203 3/4"	80 MPH LIQUID FILLED SPEEDOMETER WHITE
430243223 3/4"	100 MPH LIQUID FILLED SPEEDOMETER BLACK
480248223 3/4"	100 MPH LIQUID FILLED SPEEDOMETER WHITE
430443243 3/4"	120 MPH LIQUID FILLED SPEEDOMETER BLACK
480448243 3/4"	120 MPH LIQUID FILLED SPEEDOMETER WHITE
430643263 3/4"	140 MPH LIQUID FILLED SPEEDOMETER BLACK
480648263 3/4"	140 MPH LIQUID FILLED SPEEDOMETER WHITE

HEADKIT4 3/4" DESCRIPTION

18001180064 3/4"	100 MPH LIQUID FILLED SPEEDOMETER WHITE
-------	------------	-------------	---

4" Liquid Filled



PART # DESCRIPTION

41004"	80 MPH LIQUID FILLED SPEEDOMETER HEAD - BLACK
41204"	80 MPH LIQUID FILLED SPEEDOMETER KIT - BLACK
46004"	80 MPH LIQUID FILLED SPEEDOMETER HEAD - WHITE
46204"	80 MPH LIQUID FILLED SPEEDOMETER KIT - WHITE

41024"	100 MPH LIQUID FILLED SPEEDOMETER HEAD - BLACK
41224"	100 MPH LIQUID FILLED SPEEDOMETER KIT - BLACK
46024"	100 MPH LIQUID FILLED SPEEDOMETER HEAD - WHITE
46224"	100 MPH LIQUID FILLED SPEEDOMETER KIT - WHITE

PART # DESCRIPTION

41044"	120 MPH LIQUID FILLED SPEEDOMETER HEAD - BLACK
41244"	120 MPH LIQUID FILLED SPEEDOMETER KIT - BLACK
46044"	120 MPH LIQUID FILLED SPEEDOMETER HEAD - WHITE
46244"	120 MPH LIQUID FILLED SPEEDOMETER KIT - WHITE

41064"	140 MPH LIQUID FILLED SPEEDOMETER HEAD - BLACK
41264"	140 MPH LIQUID FILLED SPEEDOMETER KIT - BLACK
46064"	140 MPH LIQUID FILLED SPEEDOMETER HEAD - WHITE
46264"	140 MPH LIQUID FILLED SPEEDOMETER KIT - WHITE

3 3/8" TACHOMETERS Electric

3 3/8" TACHOMETER & TACH/HOUR METER

- Selector switch for 4, 6 and 8 cylinder and outboards.
- Tachometers come set for use with an 8 cylinder. You may need to adjust selector switch to match your application - 4 or 6 cylinder or outboard.
- 12-volt red-orange light and mounting bracket.
- Matching flourescent, UV protected pointers.
- Bolder fonts on every gauge provide a consistent appearance.
- Completely **waterproof** with new anti-fog lens that eliminate the possibility of water damage and fogging.
- Order custom gauge rims and decorative bezels in a variety of UV protected, metallic powder coated colors to compliment your boat's interior.
- 3 3/8" Cutout



4750



4253



4755



4756



4258



4753



4760

TACHOMETERS

PLATINUM	CARBON FIBER	WHITE	BLACK	DESCRIPTION
4753	4253	4752	4252	3 3/8" ELECTRIC TACHOMETER 0-6000 RPM
4755	4255	4754	4254	3 3/8" ELECTRIC TACHOMETER 0-8000 RPM
NA	NA	4750	4250	3 3/8" ELECTRIC TACHOMETER 0-10000 RPM

TACH/HOUR METERS

WHITE	BLACK	DESCRIPTION
4758	4258	3 3/8" ELECTRIC TACH/HOUR METER 0-6000 RPM
4760	4260	3 3/8" ELECTRIC TACH/HOUR METER 0-8000 RPM
4756	4256	3 3/8" ELECTRIC TACH/HOUR METER 0-10000 RPM

...CONT. **Add COLORED RIMS**



4753
Shown with 8-08 StepRim



4255
Shown with 8-02 StepRim



4250
Shown with 8-03 StepRim



4260
Shown with 338-08 Fat Rim



4758
Shown w/338-04 Fat Rim



4256
Shown with 338-06 FatRim

FAT Rims

Get the new Gaffrig FAT Rims - made specifically for our Racing Series.
Mix and match the 2 5/8", 4 5/8" and 3 3/8" gauge lines for a consistent,
HOT looking dash! (Fat Rim not available for digital GPS)

PART#	DESCRIPTION
338	GAUGE RIM FAT 3 3/8" DIAMETER

Add Color Code to Part# above: 01 - Blue, 02 - Red, 03 - Teal, 04 - Purple, 05 - Black,
06 - Yellow, 07 - White, 08 - Chrome, 09 - Gold, 10 - Platinum

Step Rims

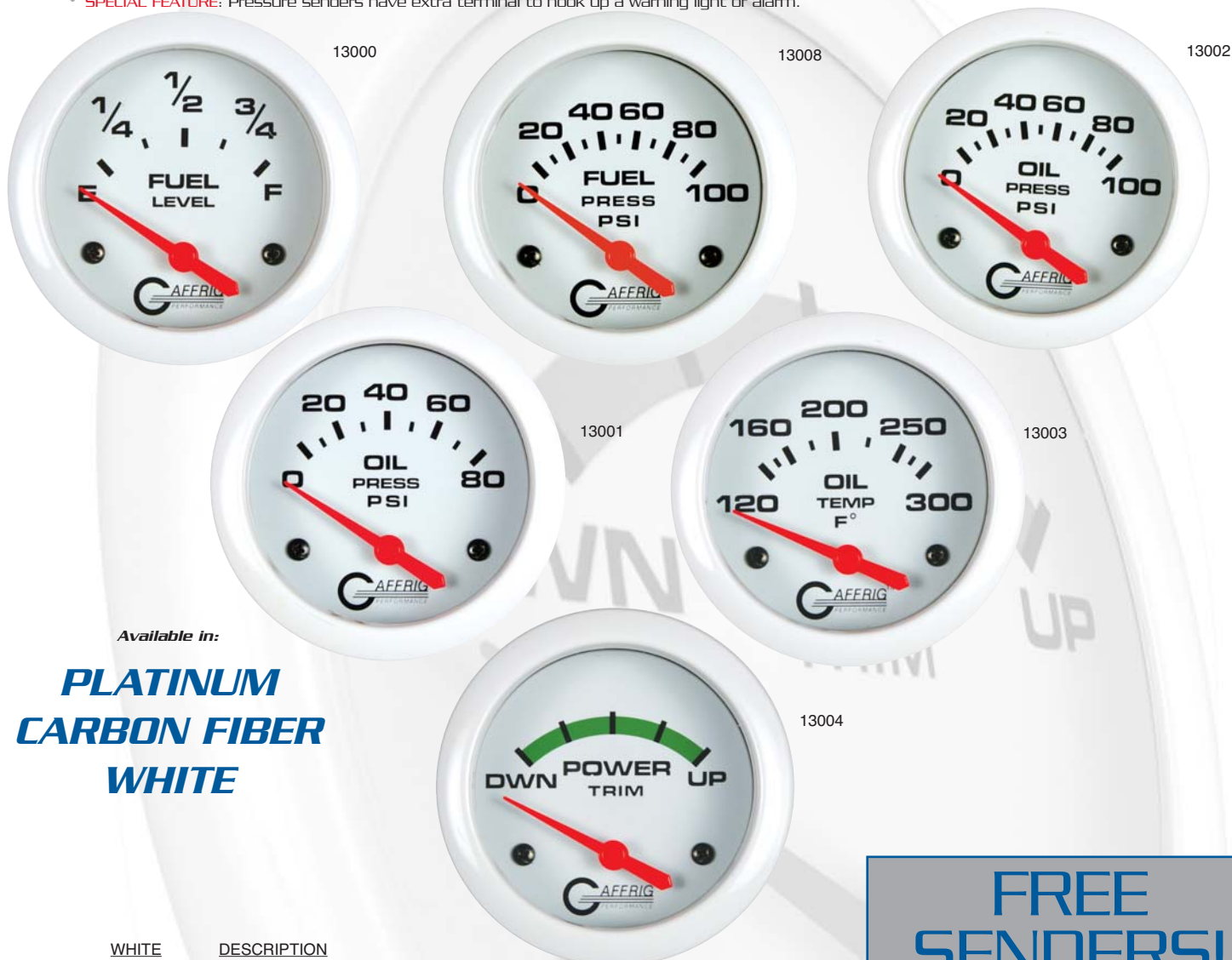
PART#	DESCRIPTION
8	GAUGE RIM STEP 3 3/8" DIAMETER

Add Color Code to Part# above: 01 - Blue, 02 - Red, 03 - Teal, 04 - Purple, 05 - Black,
06 - Yellow, 07 - White, 08 - Chrome, 09 - Gold, 10 - Platinum

2 5/8" RACING SERIES WHITE GAUGES

Give your dash a big bold new look with the Gaffrig Racing Series complete 2 5/8" gauge line.

- Featuring easy-to-read graphics with large dials for ultimate readability in the most extreme conditions.
- Red/Orange lighting for better night viewing.
- UV protected fluorescent red pointers.
- Constructed of lightweight nonferrous, non-corrosive materials.
- Front sealed to help prevent fogging.
- Requires a 2 5/8 inch cutout- 2 3/4 inch O.D.
- Electric pressure and temperature gauges **include senders**.
- **SPECIAL FEATURE:** Pressure senders have extra terminal to hook up a warning light or alarm.



Available in:

**PLATINUM
CARBON FIBER
WHITE**

WHITE	DESCRIPTION
13000	.2 5/8 ELECTRIC FUEL LEVEL 240-33 OHMS
13008	.2 5/8 ELECTRIC FUEL PRESSURE 0-100 PSI - INCLUDES SENDER
13007	.2 5/8 ELECTRIC FUEL PRESSURE 0-15 PSI - INCLUDES SENDER
13002	.2 5/8 ELECTRIC OIL PRESSURE 0-100 PSI - INCLUDES SENDER
13001	.2 5/8 ELECTRIC OIL PRESSURE 0-80 PSI - INCLUDES SENDER
13003	.2 5/8 ELECTRIC OIL TEMP 120-300 F - INCLUDES SENDER & BUSHING KIT
13004	.2 5/8 ELECTRIC TRIM METER MERCURY
13005	.2 5/8 ELECTRIC VOLTMETER 8-16V
13009	.2 5/8 ELECTRIC WATER LEVEL 240-33 OHMS
13006	.2 5/8 ELECTRIC WATER TEMP 100-250 F-INCLUDES SENDER & BUSHING KIT
13010	.2 5/8 MECHANICAL BOOST 0-35 PSI
13011	.2 5/8 MECHANICAL OIL PRESSURE 0-100 PSI
13012	.2 5/8 MECHANICAL VACUUM 0-30 HG/BOOST 0-20 PSI
13014	.2 5/8 MECHANICAL WATER PRESSURE 0-35 PSI

**FREE
SENDERS!**

With every 2 5/8" temperature and pressure gauge.

2 5/8" RACING SERIES WHITE GAUGES



13010

*Electric
Fuel Pressure
0-15 PSI*

Image not shown.



13014



13005



13009



13006



13011



13012

RACING SERIES RIMS

FAT Rims

Get the new Gaffrig FAT Rims - made specifically for our Racing Series. Mix and match the 2 5/8", 4 5/8" and 3 3/8" gauge lines for a consistent, HOT looking dash! (Fat Rim not available for digital GPs)

Available in a variety of UV protected, metallic powder-coated and chrome colors to compliment your boat's interior.

PART#	DESCRIPTION
258	GAUGE RIM FAT 2 5/8" DIAMETER

Add Color Code to Part# above: 01 - Blue, 02 - Red, 03 - Teal, 04 - Purple, 05 - Black, 06 - Yellow, 07 - White, 08 - Chrome, 09 - Gold, 10 - Platinum

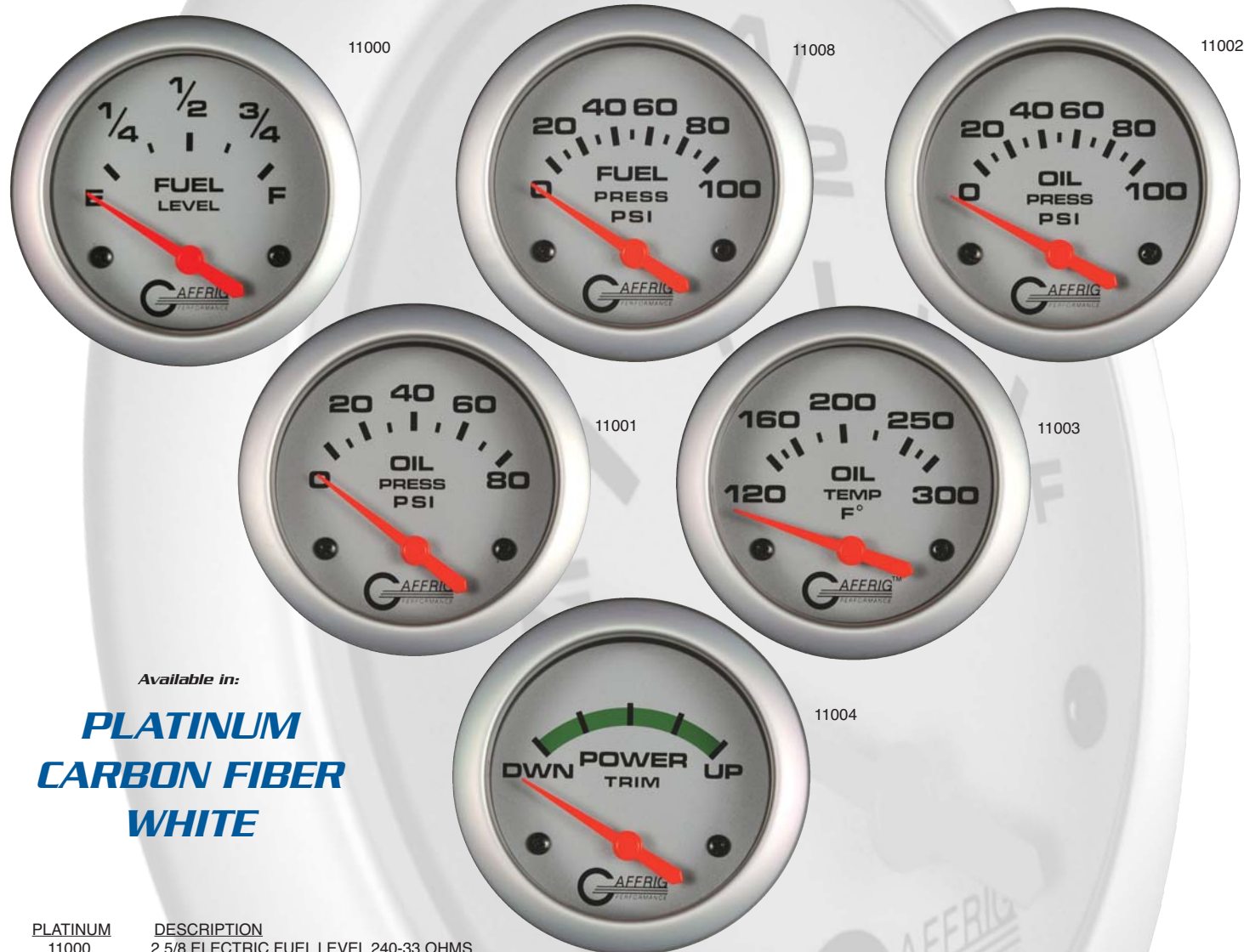


13000
Shown with 258-02
Fat Rim

2 5/8" RACING SERIES PLATINUM GAUGES

Give your dash a big bold new look with the Gaffrig Racing Series complete 2 5/8" gauge line.

- Featuring easy-to-read graphics with large dials for ultimate readability in the most extreme conditions.
- Red/Orange lighting for better night viewing.
- UV protected flourescent red pointers.
- Constructed of lightweight nonferrous, non-corrosive materials.
- Front sealed to help prevent fogging.
- Requires a 2 5/8 inch cutout- 2 3/4 inch O.D.
- Electric pressure and temperature gauges **include senders.**
- **SPECIAL FEATURE:** Pressure senders have extra terminal to hook up a warning light or alarm.



Available in:

**PLATINUM
CARBON FIBER
WHITE**

PLATINUM	DESCRIPTION
11000	.2 5/8 ELECTRIC FUEL LEVEL 240-33 OHMS
11008	.2 5/8 ELECTRIC FUEL PRESSURE 0-100 PSI - INCLUDES SENDER
11007	.2 5/8 ELECTRIC FUEL PRESSURE 0-15 PSI - INCLUDES SENDER
11002	.2 5/8 ELECTRIC OIL PRESSURE 0-100 PSI - INCLUDES SENDER
11001	.2 5/8 ELECTRIC OIL PRESSURE 0-80 PSI - INCLUDES SENDER
11003	.2 5/8 ELECTRIC OIL TEMP 120-300 F - INCLUDES SENDER & BUSHING KIT
11004	.2 5/8 ELECTRIC TRIM METER MERCURY
11005	.2 5/8 ELECTRIC VOLTMETER 8-16V
11009	.2 5/8 ELECTRIC WATER LEVEL 240-33 OHMS
11006	.2 5/8 ELECTRIC WATER TEMP 100-250 F-INCLUDES SENDER & BUSHING KIT
11010	.2 5/8 MECHANICAL BOOST 0-35 PSI
11011	.2 5/8 MECHANICAL OIL PRESSURE 0-100 PSI
11012	.2 5/8 MECHANICAL VACUUM 0-30 HG/BOOST 0-20 PSI
11014	.2 5/8 MECHANICAL WATER PRESSURE 0-35 PSI

**FREE
SENDERS!**

With every 2 5/8" temperature
and pressure gauge.

2 5/8" RACING SERIES PLATINUM GAUGES



11010

*Electric
Fuel Pressure
0-15 PSI*

Image not shown.



11014



11005



11009



11006



11011



11012

RACING SERIES RIMS

FAT Rims

Get the new Gaffrig FAT Rims - made specifically for our Racing Series. Mix and match the 2 5/8", 4 5/8" and 3 3/8" gauge lines for a consistent, HOT looking dash! (Fat Rim not available for digital GPs)

Available in a variety of UV protected, metallic powder-coated and chrome colors to compliment your boat's interior.

PART#	DESCRIPTION
258	GAUGE RIM FAT 2 5/8" DIAMETER

Add Color Code to Part# above: 01 - Blue, 02 - Red, 03 - Teal, 04 - Purple, 05 - Black, 06 - Yellow, 07 - White, 08 - Chrome, 09 - Gold, 10 - Platinum



11002
Shown with 258-08
Fat Rim

2 5/8" RACING SERIES

CARBON FIBER GAUGES

Give your dash a big bold new look with the Gaffrig Racing Series complete 2 5/8" gauge line.

- Featuring easy-to-read graphics with large dials for ultimate readability in the most extreme conditions.
- Red/Orange lighting for better night viewing.
- UV protected fluorescent red pointers.
- Constructed of lightweight nonferrous, non-corrosive materials.
- Front sealed to help prevent fogging.
- Requires a 2 5/8 inch cutout- 2 3/4 inch O.D.
- Electric pressure and temperature gauges **include senders**.
- **SPECIAL FEATURE:** Pressure senders have extra terminal to hook up a warning light or alarm.



12000



12008



12002



12001



12003



12004

Available in:

**PLATINUM
CARBON FIBER
WHITE**

CARBON FIBER	DESCRIPTION
12000	2 5/8 ELECTRIC FUEL LEVEL 240-33 OHMS
12001	2 5/8 ELECTRIC OIL PRESSURE 0-80 PSI - INCLUDES SENDER
12007	2 5/8 ELECTRIC FUEL PRESSURE 0-15 PSI - INCLUDES SENDER
12002	2 5/8 ELECTRIC OIL PRESSURE 0-100 PSI - INCLUDES SENDER
12001	2 5/8 ELECTRIC OIL PRESSURE 0-80 PSI - INCLUDES SENDER
12003	2 5/8 ELECTRIC OIL TEMP 120-300 F - INCLUDES SENDER & BUSHING KIT
12004	2 5/8 ELECTRIC TRIM METER MERCURY
12005	2 5/8 ELECTRIC VOLTMETER 8-16V
12009	2 5/8 ELECTRIC WATER LEVEL 240-33 OHMS
12006	2 5/8 ELECTRIC WATER TEMP 100-250 F-INCLUDES SENDER & BUSHING KIT
12010	2 5/8 MECHANICAL BOOST 0-35 PSI
12011	2 5/8 MECHANICAL OIL PRESSURE 0-100 PSI
12012	2 5/8 MECHANICAL VACUUM 0-30 HG/BOOST 0-20 PSI
12014	2 5/8 MECHANICAL WATER PRESSURE 0-35 PSI

**FREE
SENDERS!**

With every 2 5/8" temperature and pressure gauge.

2 5/8" RACING SERIES

CARBON FIBER GAUGES



12010

Electric
Fuel Pressure
0-15 PSI

Image not shown.



12014



12005



12009



12006



12011



12012

RACING SERIES

RIMS

FAT Rims

Get the new Gaffrig FAT Rims - made specifically for our Racing Series. Mix and match the 2 5/8", 4 5/8" and 3 3/8" gauge lines for a consistent, HOT looking dash! (Fat Rim not available for digital GPS)

Available in a variety of UV protected, metallic powder-coated and chrome colors to compliment your boat's interior.

PART#	DESCRIPTION
258	GAUGE RIM FAT 2 5/8" DIAMETER

Add Color Code to Part# above: 01 - Blue, 02 - Red, 03 - Teal, 04 - Purple, 05 - Black, 06 - Yellow, 07 - White, 08 - Chrome, 09 - Gold, 10 - Platinum



12002
Shown with 258-10
Fat Rim

2" Platinum 90° Sweep Electric Gauges

Increase your safety with electronic gauges. No need to run potentially dangerous fuel lines through your boat.

- * Completely **waterproof** with new anti-fog lens that eliminate the possibility of water damage and fogging.
- * Substantially improved red-orange or white lighting for better night viewing.
- * Matching flourescent, UV protected pointers and larger, bolder fonts on every gauge provide a consistent appearance.
- * Non-ferrous mounting hardware with a 2 1/8" standard cutout size.
- * Gauge rims and decorative bezels offered in a variety of UV protected, metallic powder-coated colors or chrome to compliment your boat's interior.
- * For optimum results — only use Gaffrig Senders.



5826



5810



5802



5806



5840



5832

PART # DESCRIPTION

58102" ELECTRIC ENGINE HOUR METER
58022" ELECTRIC FUEL LEVEL 240-33
58062" ELECTRIC FUEL PRESS. 0-15 PSI
58042" ELECTRIC FUEL PRESS. 0-100 PSI
58122" ELECTRIC OIL PRESSURE 0-100 PSI
58162" ELECTRIC OIL PRESSURE 0-80 PSI
58202" ELECTRIC OIL TEMP. 100-320 F
58242" ELECTRIC PYROMETER 0-1600 F - 270 SWEEP
58262" ELECTRIC TRIM METER MERCURY
58322" ELECTRIC VOLTMETER 8-16 VOLT
58402" ELECTRIC WATER TEMP. 100-240 F

2" PLATINUM 90° Sweep Electric Gauges



5804



5812



5824



5816



5820

RIMS FOR 2" GAUGES

PART # DESCRIPTION

2.....GAUGE RIM 2" DIAMETER

Color Code

Add to Part # 01 - Blue, 02 - Red, 03 - Teal, 04 - Purple, 05 - Black,
06 - Yellow, 07 - White, 08 - Chrome, 09 - Gold, 10 - Platinum



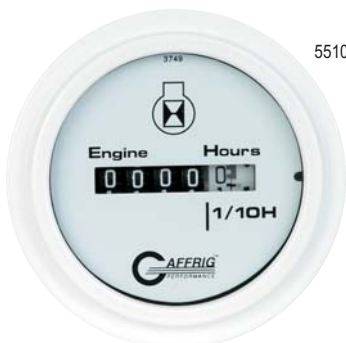
2" WHITE 90° Sweep Electric Gauges

Increase your safety with electronic gauges. No need to run potentially dangerous fuel lines through your boat.

- Completely **waterproof** with new anti-fog lens that eliminate the possibility of water damage and fogging.
- Substantially improved red-orange or white lighting for better night viewing.
- Matching fluorescent, UV protected pointers and larger, bolder fonts on every gauge provide a consistent appearance.
- Non-ferrous mounting hardware with a 2 1/8" standard cutout size.
- Gauge rims and decorative bezels offered in a variety of UV protected, metallic powder-coated colors or chrome to compliment your boat's interior.
- For optimum results — only use Gaffrig Senders.



5500



5510



5502



5516



5504



5506



5508



5512

PART # DESCRIPTION

55002" ELECTRIC AMMETER - 60/+60 AMP
55102" ELECTRIC ENGINE HOUR METER
55022" ELECTRIC FUEL LEVEL 240-33
55062" ELECTRIC FUEL PRESS. 0-15 PSI
55082" ELECTRIC FUEL PRESS. 0-60 PSI
55042" ELECTRIC FUEL PRESS. 0-100 PSI
55122" ELECTRIC OIL PRESSURE 0-100 PSI
55162" ELECTRIC OIL PRESSURE 0-80 PSI
55202" ELECTRIC OIL TEMP. 100-320 F
55242" ELECTRIC PYROMETER 0-1600 F - 270 SWEEP

PART # DESCRIPTION

55262" ELECTRIC TRIM METER MERCURY
55282" ELECTRIC TRIM METER OMC
55292" ELECTRIC TRANS. PRESSURE 0-400 PSI
55302" ELECTRIC TRANS. TEMP. 140-320 F
55322" ELECTRIC VOLTMETER 8-16 VOLT
55362" ELECTRIC VOLTMETER 16-32 VOLT
55402" ELECTRIC WATER TEMP. 100-240 F
55422" ELECTRIC WATER TEMP. 100-280 F



5520

INTERNATIONAL 2" GAUGES

PART # DESCRIPTION

58752" ELECTRIC OIL PRESSURE 0-8 BARS WHITE
58762" ELECTRIC WATER TEMP 40-120 C WHITE

*OTHER INTERNATIONAL GAUGES AVAILABLE UPON REQUEST.
QUANTITY MINIMUMS AND LEAD TIMES MAY APPLY.

***See page 8 for additional 3 3/8" International Speedometer.**



5875



5876

2" WHITE 90° Sweep Electric Gauges



5524



5526



5528



5529



5530



5532



5536



5540



5542

RIMS FOR 2" GAUGES

PART # DESCRIPTION

2.....GAUGE RIM 2" DIAMETER

Color Code

Add to Part # 01 – Blue, 02 – Red, 03 – Teal, 04 – Purple, 05 – Black,
06 – Yellow, 07 – White, 08 – Chrome, 09 – Gold, 10 – Platinum



2" **BLACK** 90° Sweep Electric Gauges

Increase your safety with electronic gauges. No need to run potentially dangerous fuel lines through your boat.

- Completely **waterproof** with new anti-fog lens that eliminate the possibility of water damage and fogging.
- Substantially improved red-orange or white lighting for better night viewing.
- Matching flourescent, UV protected pointers and larger, bolder fonts on every gauge provide a consistent appearance.
- Non-ferrous mounting hardware with a 2 1/8" standard cutout size.
- Gauge rims and decorative bezels offered in a variety of UV protected, metallic powder-coated colors or chrome to compliment your boat's interior.
- For optimum results — only use Gaffrig Senders.



5000



5010



5002



5006



5008



5004



5012



5016



5020

PART # DESCRIPTION

50002" ELECTRIC AMMETER - 60/+60 AMP
50102" ELECTRIC ENGINE HOUR METER
50022" ELECTRIC FUEL LEVEL 240-33
50062" ELECTRIC FUEL PRESS. 0-15 PSI
50082" ELECTRIC FUEL PRESS. 0-60 PSI
50042" ELECTRIC FUEL PRESS. 0-100 PSI
50122" ELECTRIC OIL PRESSURE 0-100 PSI
50162" ELECTRIC OIL PRESSURE 0-80 PSI
50202" ELECTRIC OIL TEMP. 100-320 F
50242" ELECTRIC PYROMETER 0-1600 F - 270 SWEEP
50262" ELECTRIC TRIM METER MERCURY
50282" ELECTRIC TRIM METER OMC
50292" ELECTRIC TRANS. PRESSURE 0-400 PSI
50302" ELECTRIC TRANS. TEMP. 140-320 F
50322" ELECTRIC VOLTMETER 8-16 VOLT
50362" ELECTRIC VOLTMETER 16-32 VOLT
50402" ELECTRIC WATER TEMP. 100-240 F
50422" ELECTRIC WATER TEMP. 100-280 F

2" BLACK 90° Sweep Electric Gauges



5024



5026



5028



5029



5030



5032



5036



5040



5042

RIMS FOR 2" GAUGES

PART # DESCRIPTION

2.....GAUGE RIM 2" DIAMETER

Color Code

Add to Part # 01 – Blue, 02 – Red, 03 – Teal, 04 – Purple, 05 – Black,
06 – Yellow, 07 – White, 08 – Chrome, 09 – Gold, 10 – Platinum



270° SWEEP GAUGES 2" Electric

These new Electric 270° Sweep gauges give the appearance of a larger 3" gauge while conserving space on your dash.

- Completely waterproof with new anti-fog lens that eliminate the possibility of water damage and fogging.
- Substantially improved red-orange or white lighting for better night viewing.
- Matching fluorescent, UV protected pointers and larger, bolder fonts on every gauge provide a consistent appearance.
- Non-ferrous mounting hardware with 2 1/8" standard cutout size.
- Gauge rims and decorative bezels offered in a variety of UV protected, metallic powder-coated colors or chrome to compliment your boat's interior.
- For optimum results — only use Gaffrig Senders.



WHITE BLACK PLATINUM DESCRIPTION

5514	...	5014	...	NA	...	2"	ELECTRIC OIL PRESSURE 0-100 PSI – 270 DEGREE SWEEP
5518	...	5018	...	NA	...	2"	ELECTRIC OIL PRESSURE 0-80 PSI – 270 DEGREE SWEEP
5522	...	5022	...	NA	...	2"	ELECTRIC OIL TEMP. 100-320 F – 270 DEGREE SWEEP
5524	...	5024	...	5824	...	2"	ELECTRIC PYROMETER 0-1600 F – 270 DEGREE SWEEP
5534	...	5034	...	NA	...	2"	ELECTRIC VOLTMETER 10-18 VOLT – 270 DEGREE SWEEP
5538	...	5038	...	NA	...	2"	ELECTRIC VOLTMETER 20-32 VOLT – 270 DEGREE SWEEP
5544	...	5044	...	NA	...	2"	ELECTRIC WATER TEMP. 100-280 F – 270 DEGREE SWEEP
5546	...	5046	...	NA	...	2"	ELECTRIC WATER TEMP. 100-240 F – 270 DEGREE SWEEP
5548	...	5048	...	NA	...	2"	ELECTRIC FUEL LEVEL 240-330HMS – 270 DEGREE SWEEP
5550	...	5050	...	NA	...	2"	ELECTRIC FUEL PRESSURE 0-60 PSI – 270 DEGREE SWEEP
5552	...	5052	...	NA	...	2"	ELECTRIC TRIM METER MERCURY – 270 DEGREE SWEEP
6500	...	6000	...	NA	...	2"	MECHANICAL BOOST 0-15 PSI – 270 DEGREE SWEEP
6502	...	6002	...	NA	...	2"	MECHANICAL BOOST 0-35 PSI – 270 DEGREE SWEEP
6508	...	6008	...	NA	...	2"	MECHANICAL FUEL PRESS. 0-15 PSI – 270 DEGREE SWEEP
6510	...	6010	...	NA	...	2"	MECHANICAL FUEL PRESS. 0-60 PSI – 270 DEGREE SWEEP
6504	...	6004	...	NA	...	2"	MECHANICAL FUEL PRESS. 0-100 PSI – 270 DEGREE SWEEP
6512	...	6012	...	NA	...	2"	MECHANICAL OIL PRESS. 0-100 PSI – 270 DEGREE SWEEP
6514	...	6014	...	NA	...	2"	MECHANICAL OIL PRESS. 0-200 PSI – 270 DEGREE SWEEP
6516	...	6016	...	NA	...	2"	MECHANICAL VACUUM 0-30"HG – 270 DEGREE SWEEP
6518	...	6018	...	6818	...	2"	MECHANICAL VACUUM 0-30HG/BOOST 0-30 PSI – 270 DEGREE SWEEP
6520	...	6020	...	NA	...	2"	MECHANICAL WATER PRESS. 0-15 PSI – 270 DEGREE SWEEP
6522	...	6022	...	6822	...	2"	MECHANICAL WATER PRESS. 0-35 PSI – 270 DEGREE SWEEP



270° SWEEP GAUGES 2" Mechanical

All kits include 1/2" NPT connectors, 12-Volt Light, 25' hose and non-ferrous mounting hardware

- Completely waterproof with new anti-fog lens that eliminate the possibility of water damage and fogging.
- Substantially improved red-orange or white lighting for better night viewing.
- Matching fluorescent, UV protected pointers and larger, bolder fonts on every gauge provide a consistent appearance.
- Non-ferrous mounting hardware with 2 1/2" standard cutout size.
- All brass bourdon tube
- Fuel pressure sold as gauge only.
- Gauge rims and decorative bezels offered in a variety of UV protected, metallic powder-coated colors or chrome to compliment your boat's interior.



PYROMETERS

2" & 3"

**Don't forget
the *RIMS* and
BEZELS!**

Page 30



4400



4900



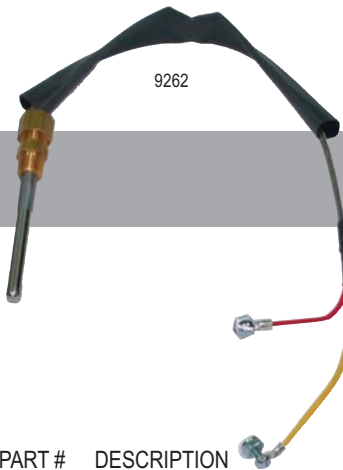
5824



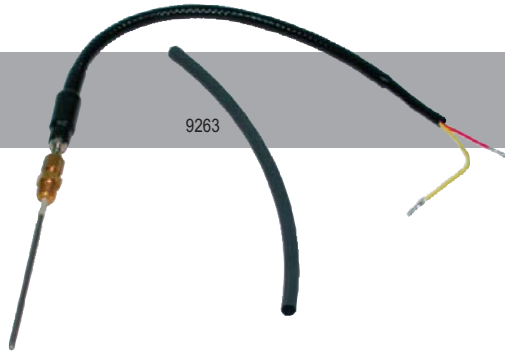
5024



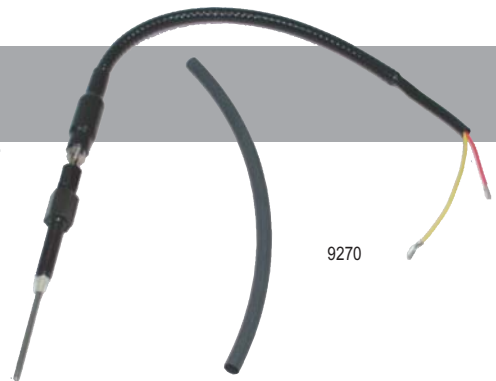
5524



9262



9263



9270

PART # DESCRIPTION

44003" ELECTRIC DUAL PYROMETER 0-1600 F BLACK
49003" ELECTRIC DUAL PYROMETER 0-1600 F WHITE

50242" ELECTRIC PYROMETER 0-1600 F BLACK
55242" ELECTRIC PYROMETER 0-1600 F WHITE
58242" ELECTRIC PYROMETER 0-1600 F PLATINUM

9261BRASS COMPRESSION FITTING 1/8" NPT FOR THIN PROBE
9262STANDARD PYROMETER PROBE WITH PART #9265
9263THIN PYROMETER PROBE WITH PART #9261

9264THERMOCOUPLING WIRE - PER FOOT
9265BRASS COMPRESSION FITTING 1/8" NPTx1/4" ID FOR STD PROBE

9266S.S. WELD BONG FITTING 1/8"NPT FOR PROBE
9267S.S. WELD BONG FITTING 1/4"NPT FOR PROBE
9268S.S. WELD BONG FITTING 3/8"NPT FOR PROBE

92695/16"-18" BOLT COMPRESSION FITTING FOR THIN PROBE
9270THIN PYROMETER PROBE WITH PART #9269

9265

9269

9261

9264

9268

9267

9266



5001



5501

PART # DESCRIPTION

5001DIGITAL DEPTH SOUNDER HEAD ONLY W/ALARM - BLACK
5501DIGITAL DEPTH SOUNDER HEAD ONLY W/ALARM - WHITE

**ADD CUSTOM COLORED OR CHROME RIMS
TO YOUR GAUGEIS**

97 GAUGE RIM FOR PT #5001/5501 ONLY.

Color Code

Add code to Part #97

05 - Black, 07 - White, 08 - Chrome, 09 - Gold

9252 ANGLED PUCK SHOOT THRU-HULL TRANSDUCER

9253 FLUSH MOUNT TRANSDUCER - INSTALLED THRU THE HULL

9256 TRANSMOUNT TRANSDUCER ONLY

9258 10' EXTENSION CABLE FOR DIGITAL DEPTH SOUNDER

9260 20' EXTENSION CABLE FOR DIGITAL DEPTH SOUNDER

9271 CABLE ADAPTOR PLUG

Shoot thru transducer will not shoot thru coring or aluminum. Use transom mount.



9256



9253



9260



9271



9252

DEPTH SOUNDER KITS LARGE DISPLAY

NEW!

Built for high speed performance. Each kit comes complete with head unit, combination transom/in-hull transducer and mounting hardware.

- Instant depth readings in 1/10 precision updated 4x per second.
- Largest liquid crystal display available.
- Impact and waterproof front face.
- Combination transom/in-hull transducer. (Install as transom mount if hull has coring or aluminum.)
- Withstands the harshest marine environments.
- Depth readings from 2.5 - 200 feet.
- Easy touch programming.
- Depth range alarm signaling.
- Reads in feet and meters.
- Soft glow green backlighting for easy night viewing.
- Unit size 2.55" D x 3.22" L. 2 1/16" Cutout.

PART # BLACK OR WHITE DIAL

5003 HIGH PERFORMANCE DIGITAL DEPTH SOUNDER KIT W/BLACK DIAL

5005 HIGH PERFORMANCE DIGITAL DEPTH SOUNDER KIT W/WHITE DIAL

ADD CUSTOM POWDERCOATED OR CHROME RIM TO YOUR GAUGE!

99 GAUGE RIM FOR PT #5003/5005 ONLY.

Color Code

Add code to Part #99

01 - Blue, 02 - Red, 03 - Teal, 04 - Purple, 05 - Black,
06 - Yellow, 07 - White, 08 - Chrome, 09 - Gold, 10 - Platinum



5801-10

PART # PLATINUM DIAL WITH COLORED RIM

5801-01 HIGH PERFORMANCE DIGITAL DEPTH SOUNDER KIT W/BUE RIM

5801-02 HIGH PERFORMANCE DIGITAL DEPTH SOUNDER KIT W/RED RIM

5801-03 HIGH PERFORMANCE DIGITAL DEPTH SOUNDER KIT W/TEAL RIM

5801-04 HIGH PERFORMANCE DIGITAL DEPTH SOUNDER KIT W/PURPLE RIM

5801-05 HIGH PERFORMANCE DIGITAL DEPTH SOUNDER KIT W/BLACK RIM

5801-06 HIGH PERFORMANCE DIGITAL DEPTH SOUNDER KIT W/YELLOW RIM

5801-07 HIGH PERFORMANCE DIGITAL DEPTH SOUNDER KIT W/WHITE RIM

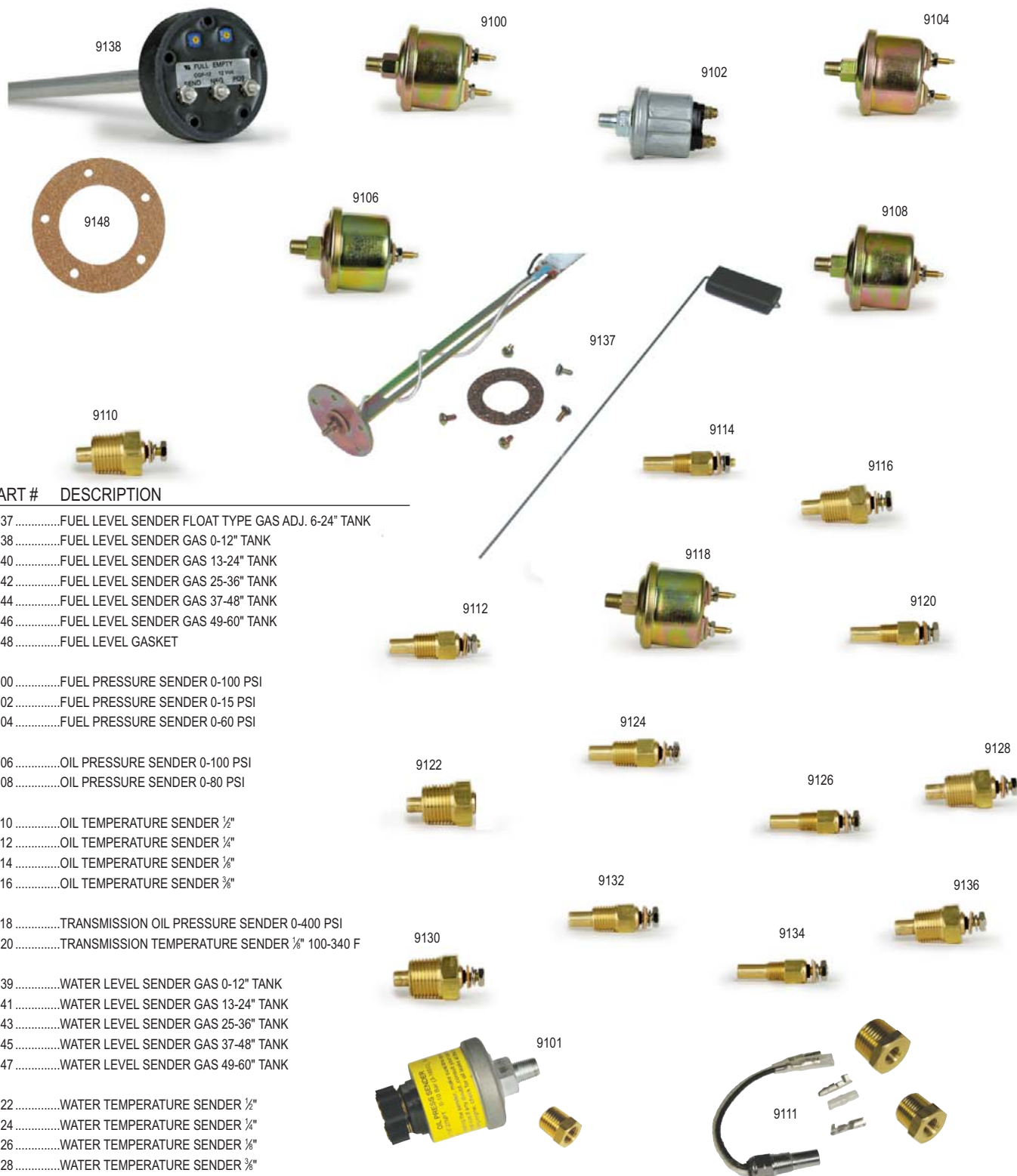
5801-08 HIGH PERFORMANCE DIGITAL DEPTH SOUNDER KIT W/CHROME RIM

5801-09 HIGH PERFORMANCE DIGITAL DEPTH SOUNDER KIT W/GOLD RIM

5801-10 HIGH PERFORMANCE DIGITAL DEPTH SOUNDER KIT W/PLATINUM RIM

GAUGE SENDERS

For optimum results — only use Gaffrig Senders.



PART # DESCRIPTION

9137FUEL LEVEL SENDER FLOAT TYPE GAS ADJ. 6-24" TANK
 9138FUEL LEVEL SENDER GAS 0-12" TANK
 9140FUEL LEVEL SENDER GAS 13-24" TANK
 9142FUEL LEVEL SENDER GAS 25-36" TANK
 9144FUEL LEVEL SENDER GAS 37-48" TANK
 9146FUEL LEVEL SENDER GAS 49-60" TANK
 9148FUEL LEVEL GASKET

9100FUEL PRESSURE SENDER 0-100 PSI
 9102FUEL PRESSURE SENDER 0-15 PSI
 9104FUEL PRESSURE SENDER 0-60 PSI

9106OIL PRESSURE SENDER 0-100 PSI
 9108OIL PRESSURE SENDER 0-80 PSI

9110OIL TEMPERATURE SENDER 1/2"
 9112OIL TEMPERATURE SENDER 1/4"
 9114OIL TEMPERATURE SENDER 1/8"
 9116OIL TEMPERATURE SENDER 3/8"

9118TRANSMISSION OIL PRESSURE SENDER 0-400 PSI
 9120TRANSMISSION TEMPERATURE SENDER 1/8" 100-340 F

9139WATER LEVEL SENDER GAS 0-12" TANK
 9141WATER LEVEL SENDER GAS 13-24" TANK
 9143WATER LEVEL SENDER GAS 25-36" TANK
 9145WATER LEVEL SENDER GAS 37-48" TANK
 9147WATER LEVEL SENDER GAS 49-60" TANK

9122WATER TEMPERATURE SENDER 1/2"
 9124WATER TEMPERATURE SENDER 1/4"
 9126WATER TEMPERATURE SENDER 1/8"
 9128WATER TEMPERATURE SENDER 3/8"

9130HIGH WATER TEMPERATURE SENDER 1/2"
 9132HIGH WATER TEMPERATURE SENDER 1/4"
 9134HIGH WATER TEMPERATURE SENDER 1/8"
 9136HIGH WATER TEMPERATURE SENDER 3/8"

9101PRESSURE SENDER FOR 2 5/8" RACING SERIES ONLY
 9111TEMPERATURE SENDER FOR 2 5/8" RACING SERIES ONLY

PART # DESCRIPTION

7043LIGHT BOOT - GREEN
 7044LIGHT BOOT - RED



RIMS AND BEZELS

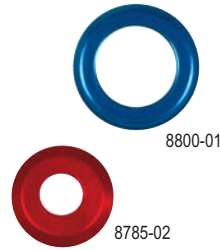
Flat Bezels

PART # DESCRIPTION

8785FLAT BEZEL THREADED 1" O.D. FOR TOGGLE SWITCHES
8800FLAT BEZEL 3/4 I.D. x 1 5/16" O.D. - FOR IGNITION SWITCHES
8000FLAT BEZEL 2 1/16 I.D. x 2 3/4" O.D.
8050FLAT BEZEL 2 5/8" I.D. x 3 1/4" O.D.
8075FLAT BEZEL 3 1/8 I.D. x 4" O.D. - FOR DUAL PYROMETER
8200FLAT BEZEL 3 3/8 I.D. x 4 1/4" O.D.
8400FLAT BEZEL 3 3/4 I.D. x 4 1/2" O.D.
8600FLAT BEZEL 4 I.D. x 5" O.D.
8650FLAT BEZEL 4 5/8" I.D. x 5 1/2" O.D.
8675FLAT BEZEL 4 3/4" I.D. x 5 1/2" O.D.

Color Code

Add to Part # 01 - Blue, 02 - Red, 03 - Teal, 04 - Purple, 05 - Black, 06 - Yellow, 07 - White, 08 - Chrome, 09 - Gold, 10 - Platinum



8000

Angled Bezels

PART # DESCRIPTION

8100ANGLED BEZEL 2 1/16 I.D. x 2 13/16" O.D.
8150ANGLED BEZEL 2 5/8" I.D. x 3 3/8" O.D.
8300ANGLED BEZEL 3 3/8 I.D. x 4 3/8" O.D.
8500ANGLED BEZEL 3 3/4 I.D. x 4 5/8" O.D.
8700ANGLED BEZEL 4 I.D. x 5 1/8" O.D.
8750ANGLED BEZEL 4 5/8" I.D. x 5 11/16" O.D.
8775ANGLED BEZEL 4 3/4" I.D. x 5 11/16" O.D.

Color Code

Add to Part # 01 - Blue, 02 - Red, 03 - Teal, 04 - Purple, 05 - Black, 06 - Yellow, 07 - White, 08 - Chrome, 09 - Gold, 10 - Platinum



8100

Fat Rims

PART # DESCRIPTION

258GAUGE RIM FAT 2 5/8" DIAMETER
338GAUGE RIM FAT 3 3/8" DIAMETER
458GAUGE RIM FAT 4 5/8" DIAMETER

Color Code

Add to Part # 01 - Blue, 02 - Red, 03 - Teal, 04 - Purple, 05 - Black, 06 - Yellow, 07 - White, 08 - Chrome, 09 - Gold, 10 - Platinum



Rims

PART # DESCRIPTION

2GAUGE RIM STEP 2" DIAMETER
3GAUGE RIM STEP 3" DIAMETER
8GAUGE RIM STEP 3 3/8" DIAMETER
99GAUGE RIM FOR DEPTH SOUNDERS #5003,5005 & 5801 ONLY

Color Code

Add to Part # -01 - Blue, 02 - Red, 03 - Teal, 04 - Purple, 05 - Black, 06 - Yellow, 07 - White, 08 - Chrome, 09 - Gold, 10 - Platinum

PART # DESCRIPTION

97GAUGE RIM FOR DEPTH SDRS #5001 & 5501 ONLY
----	---

Color Code

Add to Part # - 05 - Black, 07 - White, 08 - Chrome, 09 - Gold





PART # DESCRIPTION

Specify hose size when ordering parts – 1/8" or 1/4" inside diameter

- 7000PITOT TUBE ASSEMBLY KIT 7" – UNIVERSAL BOLT PATTERN
- 7001PITOT TUBE ASSEMBLY KIT 10" – UNIVERSAL BOLT PATTERN
- 7002PITOT TUBE ASSEMBLY KIT 5" – UNIVERSAL BOLT PATTERN
- 7003PITOT TUBE ASSEMBLY KIT 7" – MERCURY RACE BOLT PATTERN
- 7004KICK-UP MOUNT ASSEMBLY KIT 7" – MERCURY RACE BOLT PATTERN
- 7005KICK-UP MOUNT ASSEMBLY KIT 10" – MERCURY RACE BOLT PATTERN
- 7006KICK-UP MOUNT ASSEMBLY KIT 5" – MERCURY RACE BOLT PATTERN
- 7015KICK-UP MOUNT ONLY – MERCURY RACE BOLT PATTERN
- 7007MERCURY REVERSE MOUNT ASSEMBLY
- 7008MERCURY REVERSE MOUNT – NO FITTINGS
- 7009RECOIL BLADE SPEEDOMETER PICK-UP – 5" ASSEMBLY
- 7010PITOT TUBE RECOIL BLADE – 5"
- 7011PITOT TUBE RECOIL BLADE – 7"
- 7038RECOIL KICK-UP RACE SPRINGS – PAIR
- 7039RECOIL KICK-UP STANDARD SPRINGS – 1 PAIR
- 7012PITOT TUBE STANDARD – 7"
- 7013PITOT TUBE SHORT – 5"
- 7014PITOT TUBE LONG – 10"





PART # DESCRIPTION

Specify hose size when ordering parts – 1/8" or 1/4" inside diameter

7018CLAMSHELL COVER FOR HOSE – 1/4" O.D. - BLACK
7019CLAMSHELL COVER FOR HOSE – 1/2" O.D. - BLACK

7045CLAMSHELL COVER FOR HOSE – 1/4" O.D. - WHITE
7046CLAMSHELL COVER FOR HOSE – 1/2" O.D. - WHITE

7020PUSH-ON HIGH PRESS. SPEEDO HOSE/FOOT – 3/8" O.D. x 1/4" I.D.
7021PUSH-ON HIGH PRESS. SPEEDO HOSE/FOOT – 1/2" O.D. x 1/4" I.D.

7023PITOT TUBE MOUNT ONLY – UNIVERSAL BOLT PATTERN
7024PITOT TUBE MOUNT ONLY – MERCURY RACE BOLT PATTERN
7025PITOT TUBE FITTING – ACCEPTS #4 AN HOSE FITTING
7029PITOT TUBE FITTING TO 1/8" I.D. HOSE

7026AN #4 HOSE FITTING
7034AN #4 HOSE FITTING x 1/8" NPT FEMALE HARD CHROMED

7035SPEEDO FITTING 1/8" NPT FEMALE TO 1/8" I.D. HOSE
7027SPEEDO FITTING 1/8" NPT TO AAN #4 HOSE FITTING ADAPTER
7028SPEEDO FITTING 1/8" NPT FEMALE TO 1/8" I.D. HOSE

7030COMPRESSION FITTING 1/8" NPT FEMALE FOR 1/8" O.D. HOSE TUBING
7031COMPRESSION FITTING 1/8" NPT MALE FOR 1/8" O.D. HOSE TUBING
7032BUSHING 1/8" NPT FEMALE x 1/4" NPT MALE

7036PITOT TUBE FITTING FITS 1/8" I.D. HOSE S.S.
7037PITOT TUBE FITTING FITS 1/8" I.D. HOSE S.S.

704225' NYLON 1/8" O.D. HOSE AND FITTINGS FOR MECHANICAL GAUGE

MUFFLERS

SILENCERS...

There is no escaping the fact that there is a muffler in every performance boater's future.

Each year increasingly tougher anti-noise regulations continue to be passed and strictly enforced.

This results not only in fines for the offending boater, but also, inconvenience and lost boating time. Many states now require that all new boats are sold with mufflers and more states will soon be added to the list.

High performance boaters equate mufflers with loss of power and speed. This equation does not apply to GAFFRIG Silencers. As the acknowledged industry leader in marine silencer technology and innovation, GAFFRIG Silencers permit serious boaters to meet the toughest anti-noise ordinances without loss of power.

The GAFFRIG name is synonymous with quality and performance. We use only the finest grade stainless steel construction and Tig welding to manufacture the highest quality silencer on the market. Our patented technology "silences" the competition.

We offer several silencing systems, which will precisely fit most applications. Custom work is also available.

The super high-performance boats of the military, US Customs and Coast guard specify GAFFRIG Silencers, since only GAFFRIG products provide the utmost degree of performance and reliability under the most severe field conditions.

Our commitment is to be the best! For performance, Quality, Innovation and Service—Insist on GAFFRIG.

Patented Gaffrig Performance Mufflers were designed specifically for high horsepower engines

- Highly polished, all stainless steel construction with TIG welding
- Air actuated by pneumatic cylinder and pump
- Remote dash switch allows operator controlled opening and closing on automatic mufflers
- Available in 4", 4 1/2", and 5" diameter tail pipes
- Kit includes: air cylinders, air pump module, fittings, switch and hose

Performance Series

Maximum noise reduction without losing horsepower

Available as Full Time or Switchable Muffler

Clamp-on tail pipe or transom mount.

Down firing exhaust when muffler baffle is closed

Automatic measures 16" x 6 7/8"

Full time measures 15" x 6 7/8"



Powertip Silencers

Maximum noise reduction

Clamp-on mount to end of exhaust pipe.

Down firing exhaust when muffler baffle is closed

Measures 11" x size of pipe

Superflo Series

Maximum noise reduction without losing horsepower

Available as Full Time or Switchable Muffler

Clamp-on tail pipe or transom mount.

Aft firing exhaust, no dirty transoms from exhaust.

Automatic measures 14" x 6 7/8"

Full time measures 13" x 6 7/8"



Bullet Series

Sleek new design! Mirror finish!

100% Stainless steel construction.

Maximum noise reduction without losing horsepower

Full Time Muffler

Clamp-on tail pipe or transom mount.

Aft firing exhaust, no dirty transoms from exhaust.

Full time measures 13" x 6"

PERFORMANCE SERIES

TAIL PIPE SIZE			SWITCHABLE CLAMP-ON
4"ID	4.5"ID	5"ID	
1100	1108	1116	PERFORMANCE SERIES – 1 ONLY CLAMP-ON
1102	1110	1118	PERFORMANCE SERIES (1 – PAIR) INCLS PUMP KIT CLAMP-ON
1104	1112	1120	PERFORMANCE SERIES (2 – PAIR) INCLS PUMP KIT CLAMP-ON
1106	1114	1122	PERFORMANCE SERIES (3 – PAIR) INCLS PUMP KIT CLAMP-ON

TAIL PIPE SIZE			FULL TIME CLAMP-ON
4"ID	4.5"ID		
1132	1138		PERFORMANCE SERIES – 1 ONLY CLAMP-ON FULL TIME
1134	1140		PERFORMANCE SERIES (1 – PAIR) CLAMP-ON FULL TIME
1136	1142		PERFORMANCE SERIES (2 – PAIR) CLAMP-ON FULL TIME

TAIL PIPE SIZE			FULL TIME TRANSOM MOUNT
4"OD			
1124			PERFORMANCE SERIES – 1 ONLY TRANSOM MOUNT
1126			PERFORMANCE SERIES (1 – PAIR) INCLS PUMP KIT TRANSOM MOUNT
1128			PERFORMANCE SERIES (2 – PAIR) INCLS PUMP KIT TRANSOM MOUNT
1130			PERFORMANCE SERIES (3 – PAIR) INCLS PUMP KIT TRANSOM MOUNT

POWERTIP SERIES

TAIL PIPE SIZE			SWITCHABLE CLAMP-ON
4"ID	4.5"ID	5"ID	
1300	1308	1316	POWERTIP SILENCER – 1 ONLY CLAMP-ON
1302	1310	1318	POWERTIP SILENCER (1 – PAIR) INCLS PUMP KIT CLAMP-ON
1304	1312	1320	POWERTIP SILENCER (2 – PAIR) INCLS PUMP KIT CLAMP-ON
1306	1314	1322	POWERTIP SILENCER (3 – PAIR) INCLS PUMP KIT CLAMP-ON

SUPERFLO SERIES

TAIL PIPE SIZE			SWITCHABLE CLAMP-ON
4"ID	4.5"ID	5"ID	
1210	1218	1226	SUPERFLO SERIES – 1 ONLY CLAMP-ON
1212	1220	1228	SUPERFLO SERIES (1 – PAIR) INCLS PUMP KIT CLAMP-ON
1214	1222	1230	SUPERFLO SERIES (2 – PAIR) INCLS PUMP KIT CLAMP-ON
1216	1224	1232	SUPERFLO SERIES (3 – PAIR) INCLS PUMP KIT CLAMP-ON

TAIL PIPE SIZE			FULL TIME CLAMP-ON
4"ID	4.5"ID		
1242	1247		SUPERFLO SERIES – 1 ONLY CLAMP-ON FULL TIME
1244	1248		SUPERFLO SERIES (1 – PAIR) CLAMP-ON FULL TIME
1246	1250		SUPERFLO SERIES (2 – PAIR) CLAMP-ON FULL TIME

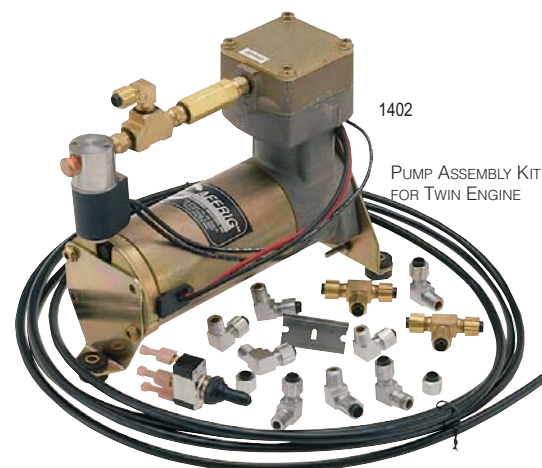
TAIL PIPE SIZE			SWITCHABLE TRANSOM MOUNT
4"OD			
1234			SUPERFLO SERIES – 1 ONLY TRANSOM MOUNT
1236			SUPERFLO SERIES (1 – PAIR) INCLS PUMP KIT TRANSOM MOUNT
1238			SUPERFLO SERIES (2 – PAIR) INCLS PUMP KIT TRANSOM MOUNT
1240			SUPERFLO SERIES (3 – PAIR) INCLS PUMP KIT TRANSOM MOUNT

TAIL PIPE SIZE			FULL TIME TRANSOM MOUNT
4"OD	4.5"OD		
1241	1251		SUPERFLO SERIES – 1 ONLY TRANSOM MOUNT FULL TIME
1243	1252		SUPERFLO SERIES (1 – PAIR) TRANSOM MOUNT FULL TIME

BULLET SERIES

TAIL PIPE SIZE			FULL TIME CLAMP-ON
4"ID	4.5"ID		
1260	1264		BULLET SERIES – 1 ONLY CLAMP-ON FULL TIME
1261	1265		BULLET SERIES (1 – PAIR) CLAMP-ON FULL TIME

TAIL PIPE SIZE			FULL TIME TRANSOM MOUNT
4"OD	4.5"OD		
1262	1266		BULLET SERIES – 1 ONLY TRANSOM MOUNT FULL TIME
1263	1267		BULLET SERIES (1 – PAIR) TRANSOM MOUNT FULL TIME



1402

PUMP ASSEMBLY KIT FOR TWIN ENGINE



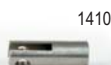
1408



1409



1411



1410



1412



7040



7041



1413



1414

ACCESSORIES

- 1401.....PUMP ASSEMBLY KIT FOR SINGLE ENGINE
- 1402.....PUMP ASSEMBLY KIT FOR TWIN ENGINE
- 1403.....PUMP ASSEMBLY KIT FOR TRIPPLE ENGINE
- 1404.....PUMP ASSEMBLY ONLY

- 1405.....FITTING KIT FOR SINGLE ENGINE
- 1406.....FITTING KIT FOR TWIN ENGINE
- 1407.....FITTING KIT FOR TRIPPLE ENGINE

- 1409.....1/4" O.D. AIR HOSE FOR MUFFLERS (PER FOOT)
- 1408.....AIR CYLINDER FOR MUFFLERS/SILENCERS
- 1413.....BRASS ELBOW 1/2" MALE NPT
- 1414.....BRASS HARD CHROMED ELBOW 1/2" MALE NPT
- 1412.....BRASS T FOR 1/2" O.D. HOSE
- 1410.....CLEVIS FOR AIR CYLINDERS
- 7040.....END CAP W/FERRULE
- 7041.....END CAP W/FERRULE HARD CHROME PLATED
- 1411.....TOGGLE SWITCH MOMENTARY ON/OFF/MOMENTARY ON SINGLE POLE

CUSTOM SIZES AVAILABLE.

CUSTOM CUTS AVAILABLE FOR CLOSE CENTER TO CENTER PIPES.

FLAME ARRESTORS

The last flame arrestor you will ever need! Manufactured to be virtually indestructible, our flame arrestors are US Coast Guard Approved.

- * Nonrestrictive maximum air flow
- * Includes 2 - 3/8" breather tubes
- * Fuel fume system
- * Holley/Rochester or Dominator
- * Available in a variety of UV protected, metallic powder-coated colors or highly polished stainless steel to compliment your boat's interior.

NEW!
Single Oval



2810
18 3/4" L x 10" W

Single

- * Highly polished, all stainless steel construction.
- * Available in 8" and 10" diameters or 18 3/4" x 10" Oval.
- * Available in 2", 3" and 5" element heights.



2104



2104-02



2204-03



2202-01

E.F.I.

- * Constructed of highly polished aluminum and stainless steel.
- * Includes 3/8" breather tube.
- * Fits 454 and 502 Magnum E.F.I. Mercury Engines
- * Uses 3" element as does our US Coast Guard approved Original Flame Arrestors



2604



2702



2700



2602



2600

FLAME ARRESTORS



Dual

- * Available in billet aluminum or highly polished stainless steel.
- * Includes adjustable base plates fitting 8 1/2" - 9" center-to-center
- * Available in 2", 3" and 5" element heights.
- * Call for custom sizes



2404-01



2404-02



2504-03



2504-04

SCREEN SIZE

2" 3" 5"

SINGLE ROUND FLAME ARRESTORS

2100 . .2104 . . .2106 SINGLE STAINLESS STEEL HOLLEY/ROCHESTER 8" DIAMETER
2200 . .2202 . . .2204 SINGLE STAINLESS STEEL HOLLEY/ROCHESTER 10" DIAMETER
2300 . .2302 . . .2304 SINGLE STAINLESS STEEL DOMINATOR 10" DIAMETER

SCREEN SIZE

2" 3" 5"

NEW! SINGLE OVAL FLAME ARRESTORS

2811 . .2810 . . .2813 SINGLE OVAL STAINLESS STEEL HOLLEY/ROCHESTER 18.75"L x 10"W
2814 . .2812 . . .2815 SINGLE OVAL STAINLESS STEEL DOMINATOR 18.75"L x 10"W

SCREEN SIZE

2" 3" 5"

DUAL BILLET ALUM. ADJUSTABLE FLAME ARRESTORS

2400 . .2404 . . .2408 DUAL BILLET ALUMINUM ADJ. BASE DOMINATOR 21.5"L x 8.75"W
2402 . .2406 . . .2410 DUAL BILLET ALUMINUM ADJ. BASE HOLLEY 21.5"L x 8.75"W

SCREEN SIZE

2" 3" 5"

DUAL STAINLESS STEEL ADJUSTABLE FLAME ARRESTORS

2500 . .2504 . . .2508 DUAL STAINLESS STEEL ADJ. BASE DOMINATOR
2502 . .2506 . . .2510 DUAL STAINLESS STEEL ADJ. BASE HOLLEY

E.F.I. FLAME ARRESTORS

2600 E.F.I. 454 AND 502 MAGNUM FLAME ARRESTOR FOR SERPENTINE BELT
2602 E.F.I. 454 AND 502 MAGNUM FLAME ARRESTOR FOR V-BELT
2604 STUD AND NUT FOR E.F.I. FLAME ARRESTOR

BREATHING TUBES

2700 BREATHING TUBE FOR FLAME ARRESTOR
2702 BREATHING TUBE FOR E.F.I. FLAME ARRESTOR

SEE PAGE 43 FOR THROTTLE CARBURETOR BRACKETS

THROTTLE CONTROLS

Handles

Our commitment is to be the best and to provide the serious performance boater with unsurpassed quality, performance, innovation and service. Therefore, each new addition to our product line comes only after extensive research and development, field testing, and quality control screening.

The NEWLY designed Gaffrig control is constructed of lightweight, durable aircraft aluminum. The handles were made larger and smoother to ensure comfortable managability. Easier installation and maintenance. Now available with our NEW illuminated handles.

- Adjustable DETENT and FRICTION make this product outstanding for any application
- Three different cable throw adjustments allow for precise setting
- All throttles include 30 series cable connection kits
- Detent and friction can be adjusted without removing unit
- Available in a variety of UV protected, metallic powder-coated colors to compliment your boat's interior.

NEW, heavy-duty aluminum throttles, built for race or pleasure, now with one or two switches mounted right in the throttle handle. This allows trim functions to be done while your hand remains in place on the throttle. The single switch can be used for trimming both drives or both tabs, and single or dual configurations can be used to activate drives, tabs, nitros, etc. The wires of these high quality, weatherproof switches run internally through the handle and brackets, leaving no exposed wires.

**Private
Labeling
Available**

THROTTLE DIMENSIONS

CUTOUT DIMENSIONS	OVERALL DIMENSIONS
1 HANDLE 1 3/4"W X 6 1/2"L	2 1/4"W X 7 3/4"L
2 HANDLE 2 1/2"W X 6 1/2"L	3 3/8"W X 7 3/4"L
3 HANDLE 3 1/2"W X 6 1/2"L	4 3/8"W X 7 3/4"L
4 HANDLE 4 3/4"W X 6 1/2"L	5 1/2"W X 7 3/4"L
5 HANDLE 5 3/4"W X 6 1/2"L	6 3/4"W X 7 3/4"L
6 HANDLE 6 3/4"W X 6 1/2"L	7 3/4"W X 7 3/4"L

Depth of Throttle is 10 1/4"

Adjust lever resistance to desired tension by inserting a 1/2" allen wrench through rubber boot at the base of the handle and turn until desired resistance is achieved. There is no need to remove unit. Periodic lubrication of rubber boots is needed. Teflon base lubricant works best.

*****WARNING: Make sure to adjust cables before operating engines.*****



THROTTLE CONTROLS

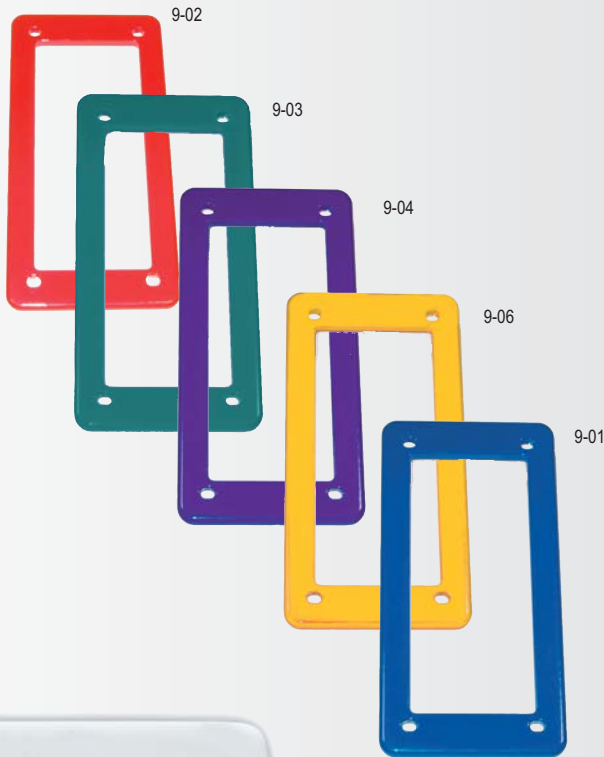


Add lighting to your handles!



We can *PRIVATE LABEL* your controls!

THROTTLES



**Controls
NOW Available
in CHROME**



3413



3216-04

PART # . . DESCRIPTIONS

- 9 THROTTLE BEZEL 2 HANDLE
- 10 THROTTLE BEZEL 3 HANDLE
- 15 THROTTLE BEZEL 4 HANDLE
- 16 THROTTLE BEZEL 6 HANDLE

Color Code:

Add to Part # 01 – Blue, 02 – Red, 03 – Teal, 04 – Purple, 05 – Black,
06 – Yellow, 07 – White, 08 – Chrome, 09 – Gold, 10 – Platinum

3413 THROTTLE POD FOR 2 HANDLE CONTROL

We can *PRIVATE LABEL* your controls!

PART # DESCRIPTIONS

SPECIFY CONFIGURATION AND CANT OF HANDLES

STANDARD CONTROL COLOR IS - WHITE

USE CODE BELOW FOR OTHER COLORS:

Add to Part # 01 - Blue, 02 - Red, 03 - Teal, 04 - Purple, 05 - Black, 06 - Yellow, 08-Chrome, 10-Platinum.

HANDLES

30001 HANDLE THROTTLE - WHITE
30021 HANDLE SHIFT - WHITE
30042 HANDLE THROTTLE - WHITE
30062 HANDLE SHIFT - WHITE
30082 HANDLE 1 SHIFT/1 THROTTLE - WHITE
30103 HANDLE THROTTLE - WHITE
30123 HANDLE SHIFT - WHITE
30144 HANDLE 2 SHIFT/2 THROTTLE - WHITE
30166 HANDLE 3 SHIFT/3 THROTTLE - WHITE

HANDLES LIGHTED

31001 HANDLE THROTTLE LIGHTED - WHITE
31021 HANDLE SHIFT LIGHTED - WHITE
31042 HANDLE THROTTLE LIGHTED - WHITE
31062 HANDLE SHIFT LIGHTED - WHITE
31082 HANDLE 1 SHIFT/1 THROTTLE LIGHTED - WHITE
31103 HANDLE THROTTLE LIGHTED - WHITE
31123 HANDLE SHIFT LIGHTED - WHITE
31144 HANDLE 2 SHIFT/2 THROTTLE LIGHTED - WHITE
31166 HANDLE 3 SHIFT/3 THROTTLE LIGHTED - WHITE

HANDLES WITH SWITCH

32001 HANDLE THROTTLE/1 SWITCH - WHITE
32021 HANDLE THROTTLE/2 SWITCH - WHITE
32042 HANDLE THROTTLE/1 SWITCH - WHITE
32062 HANDLE THROTTLE/2 SWITCH - WHITE
32082 HANDLE 1 SHIFT/1 THROTTLE/1 SWITCH - WHITE
32102 HANDLE 1 SHIFT/1 THROTTLE/2 SWITCHES - WHITE
32123 HANDLE THROTTLE/1 SWITCH - WHITE
32143 HANDLE THROTTLE/2 SWITCHES - WHITE
32164 HANDLE 2 SHIFT/2 THROTTLE/1 SWITCH - WHITE
32184 HANDLE 2 SHIFT/2 THROTTLE/2 SWITCH - WHITE
32206 HANDLE 3 SHIFT/3 THROTTLE/1 SWITCH - WHITE
32226 HANDLE 3 SHIFT/3 THROTTLE/2 SWITCHES - WHITE

HANDLES WITH SWITCHES AND LIGHTED

33001 HANDLE THROTTLE/1 SWITCH/LIGHTED - WHITE
33021 HANDLE THROTTLE/2 SWITCHES/LIGHTED - WHITE
33042 HANDLE THROTTLE/1 SWITCH/LIGHTED - WHITE
33062 HANDLE THROTTLE/2 SWITCHES/LIGHTED - WHITE
33082 HANDLE 1 SHIFT/1 THROTTLE/1 SWITCH/LIGHTED - WHITE
33102 HANDLE 1 SHIFT/1 THROTTLE/2 SWITCHES/LIGHTED - WHITE
33123 HANDLE THROTTLE/1 SWITCH/LIGHTED - WHITE
33143 HANDLE THROTTLE/2 SWITCHES/LIGHTED - WHITE
33164 HANDLE 2 SHIFT/2 THROTTLE/1 SWITCH/LIGHTED - WHITE
33184 HANDLE 2 SHIFT/2 THROTTLE/2 SWITCH/LIGHTED - WHITE
33206 HANDLE 3 SHIFT/3 THROTTLE/1 SWITCH/LIGHTED - WHITE
33226 HANDLE 3 SHIFT/3 THROTTLE/2 SWITCHES/LIGHTED - WHITE

Throttles include cable connection kits, not Neutral Safety Switch (Part # 3408)

3406CABLE CONNECTION KIT FOR THROTTLE & SHIFT CONTROLS
3408NEUTRAL SAFETY SWITCH ASSEMBLY
3410DIODE KIT FOR SINGLE ENGINE - 2 PIECES
3412MERCURISER STERN DRIVE CABLE ADAPTOR KIT FOR 33C CABLES
3414MERCURY OUTBOARD CABLE ADAPTOR KIT FOR 33C CABLES (40-300HP)
3415OMC CABLE ADAPTOR KIT FOR 33C CABLES - EVINRUDE/JOHNSON

Configuration Options

SPECIFY: FORWARD CANT OR REAR CANT

SPECIFY: RIGHT HAND - CONFIGURATION STARTS LEFT TO RIGHT

LEFT HAND - CONFIGURATION STARTS RIGHT TO LEFT

SPECIFY HANDLE CONFIGURATION: **S**=SHIFT, **T**=THROTTLE

1 HANDLE CONFIGURATIONS **S** OR **T**

2 HANDLE CONFIGURATIONS **S T T S T T S S**

3 HANDLE CONFIGURATIONS **S S S T T T**

4 HANDLE CONFIGURATIONS **S S T T S T T S T T S S**

6 HANDLE CONFIGURATIONS **S S S T T T T T T S S S S T T T S S S T T T S**



30 Series Cables and Thru - Hull Fittings

720090° THRU - HULL FITTING FOR 30 SERIES CABLE

720245° THRU - HULL FITTING FOR 30 SERIES CABLE

*7210.....30 SERIES CABLE - 10'

*Add length in feet to Part # 72 up to 38'. Use even numbers only.

EXAMPLE: 24' of Cable is Part # 7224

STEERING WHEELS



PART # LEATHER & FIBER STEERING WHEELS

- 9670-07STEERING WHEEL WHITE LEATHER WITH POLISHED SPOKE
- 9671-10STEERING WHEEL POLYURETHANE PLATINUM FIBER WITH BLACK LEATHER FINGER GRIPS
- 9673-07STEERING WHEEL WHITE LEATHER WITH POLISHED SPOKE
- 9673-05STEERING WHEEL BLACK LEATHER WITH POLISHED SPOKE

- 9672-01STEERING WHEEL BLUE LEATHER WITH PLATINUM FIBER FINGER GRIPS
 - 9672-02STEERING WHEEL RED LEATHER WITH PLATINUM FIBER FINGER GRIPS
 - 9674STEERING WHEEL WHITE LEATHER WITH YOUR CHOICE OF LEATHER FINGER GRIP COLOR.
- Select your finger grip color by adding color code to part # 9674: 01-Blue, 02-Red, 05-Black, 06-Yellow, 07-White, 10-Platinum.

- HUBS FOR SERIES 9670, 9671, 9672, 9673, 9674
- 9691HUB 2" LONG FOR 3/4" TAPERED SHAFT
 - 9697HUB 2" LONG FOR 3/4" SPLINED SHAFT

PART # PVC STEERING WHEELS

- 9600-07STEERING WHEEL WHITE PVC WITH SILVER SATIN SPOKE
- 9640-07STEERING WHEEL WHITE PVC WITH POLISHED SPOKE
- 9640-05STEERING WHEEL BLACK PVC WITH POLISHED SPOKE

- HUBS FOR SERIES 9600, 9640
- 9690HUB 1 1/2" LONG FOR 3/4" TAPERED SHAFT
 - 9692HUB 2 1/4" LONG FOR 3/4" TAPERED SHAFT
 - 9694HUB 3" LONG FOR 3/4" TAPERED SHAFT
 - 9696HUB 1 1/4" LONG FOR SQUARE MERCURY SHAFT
 - 9698HUB 2 1/4" LONG FOR 3/4" SPLINED SHAFT

STEERING WHEELS



PART # DESCRIPTION

9660STEERING WHEEL URETHANE GLOSS FINISH WITH BLACK GRIP AND SILVER SATIN SPOKE.

*CARBON FIBER AND BURLWOOD COME WITH BLACK GRIP AND BLACK SPOKE. Includes hub, cap and screws.

Color Code: Add to Part # 01 – Blue, 02 – Red, 04 – Purple, 06 – Yellow, 10 – Platinum, 11 - Carbon Fiber*, 13 - Burlwood*



PART # DESCRIPTION

9610STEERING WHEEL URETHANE GLOSS FINISH - 3 EQUALLY SPACED SILVER SATIN SPOKES

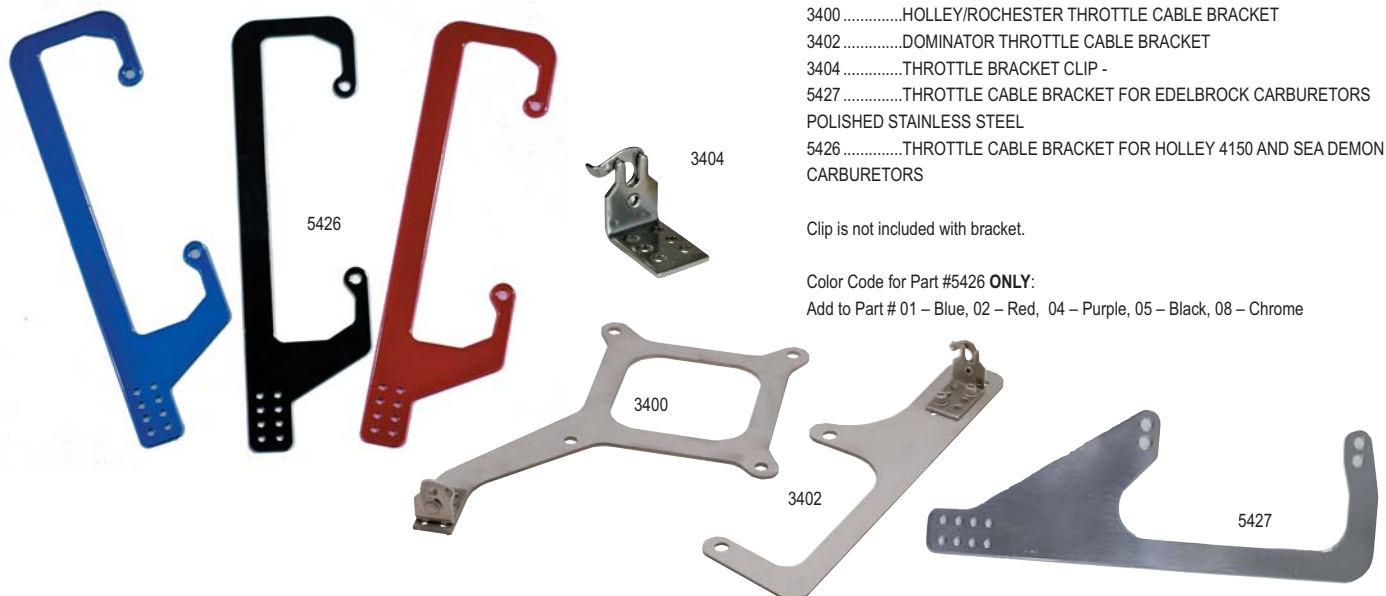
.....includes hub, cap and screws.

Color Code: Add to Part # 01 – Blue, 02 – Red, 04 – Purple, 06 – Yellow, 10 – Platinum

5425STEERING WHEEL HUB AND SHAFT ADAPTOR 3"

Color Code: Add to Part # 01 – Blue, 02 – Red, 03 – Teal, 04 – Purple, 05 – Black, 06 – Yellow, 07 – White, 08 – Chrome, 09 – Gold, 10 – Platinum

BRACKETS



PART # DESCRIPTIONS

3400HOLLEY/ROCHESTER THROTTLE CABLE BRACKET
 3402DOMINATOR THROTTLE CABLE BRACKET
 3404THROTTLE BRACKET CLIP -
 5427THROTTLE CABLE BRACKET FOR EDELBROCK CARBURETORS
 POLISHED STAINLESS STEEL
 5426THROTTLE CABLE BRACKET FOR HOLLEY 4150 AND SEA DEMON
 CARBURETORS

Clip is not included with bracket.

Color Code for Part #5426 **ONLY**:

Add to Part # 01 - Blue, 02 - Red, 04 - Purple, 05 - Black, 08 - Chrome

FIRE EXTINGUISHERS AND MOUNTS



PART # DESCRIPTIONS

2110FIRE EXTINGUISHER, 2.5 LBS, DRY CHEMICAL MEASURES 15" BY 3"
NO COLOR CODES AVAILABLE

2110FIRE EXTINGUISHER MOUNTS. USE COLOR GUIDE BELOW.

Color Code: Add to Part # 01 - Blue, 02 - Red, 03 - Teal, 04 - Purple, 05 - Black, 06 - Yellow, 07 - White, 08 - Chrome

BILLET ACCESSORIES

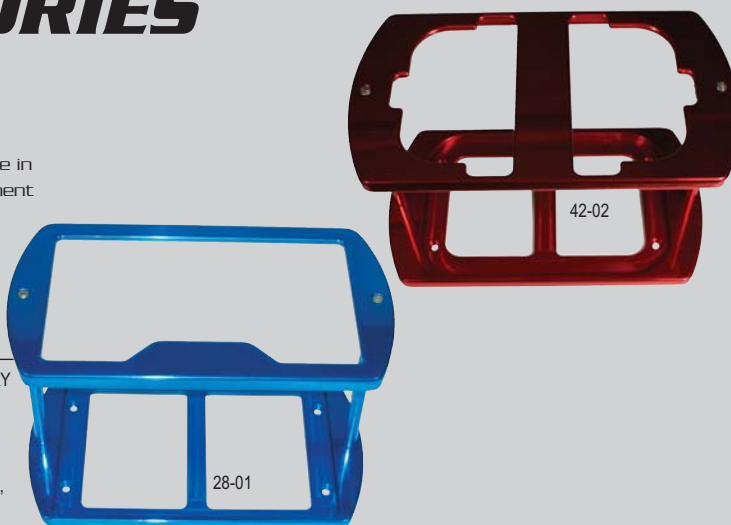
Battery Boxes

Battery Boxes are CNC machined from 1/2" 6061-T6 Billet Aluminum. Each battery box is hand polished and available in a variety of UV protected powdercoated colors to compliment your boat's interior.

PART # DESCRIPTIONS

28BATTERY BOX BILLET GROUP 24 for 10 3/8" L X 6 3/4" W BATTERY
 29BATTERY BOX BILLET GROUP 27 for 12" L X 6 3/4" W BATTERY
 42BATTERY BOX BILLET OPTIMA for 9 3/4" x 6 3/4" BATTERY

Color Code: Add to Part # 01 - Blue, 02 - Red, 03 - Teal, 04 - Purple, 05 - Black, 06 - Yellow, 07 - White, 08 - Chrome, 09 - Gold.





Drink Holders

Small Aluminum Cup Holders will fit into a 3.125" cutout and has a 3.00" I.D.

Large Aluminum Cup Holders will fit into a 3.750" cutout and has a 3.60 I.D.

PART # DESCRIPTIONS

4LARGE DRINK HOLDER

1SMALL DRINK HOLDER

Color Code: Add to Part # 01 – Blue, 02 – Red, 03 – Teal, 04 – Purple, 05 – Black, 06 – Yellow, 07 – White, 08 – Chrome, 09 – Gold, 10 – Platinum

Engine Vents

Our billet vents are machined from 1/4" 6061-T6 billet aluminum and they comply with all US Coast Guard regulations. Match them up with our grab handles that fit right over the vent.

PART # DESCRIPTIONS

35.....SMALL VENT PLATE - SINGLE POINTED END. 7 1/2" x 3 1/2" WITH 5" BOLT HOLE CENTERS

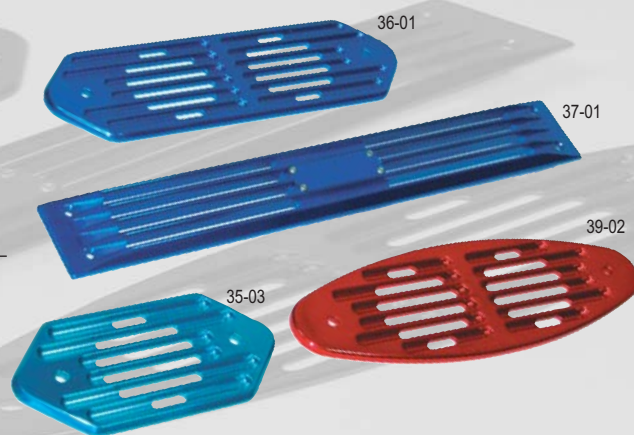
38.....SMALL VENT PLATE - SINGLE ROUNDED END. 7 1/2" x 3 3/4" WITH 5" BOLT HOLE CENTERS

36.....LARGE VENT PLATE - DUAL POINTED END. 12 1/2" x 3 1/2" WITH 10" BOLT HOLE CENTERS

39.....LARGE VENT PLATE - DUAL ROUNDED END. 12 1/2" x 3 3/4" WITH 10" BOLT HOLE CENTERS

37.....LONG VENT PLATE - SQUARE END. 17 5/8" x 2 1/2"

Color Code: Add to Part # 01 – Blue, 02 – Red, 03 – Teal, 04 – Purple, 05 – Black, 06 – Yellow, 07 – White, 08 – Chrome, 09 – Gold.



Grab Handles

STAINLESS STEEL GRAB HANDLES

These handles are great when boarding your boat, or holding on inside for a rough ride.

1911SMALL STAINLESS GRAB HANDLE W/BLACK LEATHER WRAP. 12 5/8" OVERALL W 11 1/16" BOLT CENTERS.

1912LARGE STAINLESS GRAB HANDLE W/BLACK LEATHER WRAP. 16" OVERALL W 14 9/16" BOLT CENTERS.

ALUMINUM GRAB HANDLES

Handles are machined from Solid Billet Aluminum. Grip handles have finger slots for a good grip and the Smooth handles are machined with a cleaner look and a smooth feel. Both handles will fit our large and small engine vents. They mount with 5/16-18" bolts (not included).

PART # DESCRIPTIONS

17GRAB HANDLE SMALL SMOOTH - 6 3/4" OVERALL W/ 5" BOLT CENTERS

18GRAB HANDLE SMALL GRIP - 7" OVERALL W/5" BOLT CENTERS

19GRAB HANDLE LARGE SMOOTH - 11 1/2" OVERALL W/10" BOLT CENTERS

20GRAB HANDLE LARGE GRIP - 11 1/2" OVERALL W/ 10" BOLT CENTERS

Color Code for Part#'s 17-20: Add to Part # 01 – Blue, 02 – Red, 03 – Teal, 04 – Purple, 05 – Black, 06 – Yellow, 07 – White, 08 – Chrome, 09 – Gold, 10 – Platinum.



DOCKING CLEATS & BEZELS

PART # DESCRIPTION

5200SLIM PULL UP CLEAT 4.5"

5300SLIM PULL UP CLEAT 6"

5400POP-UP CLEAT 4.5"

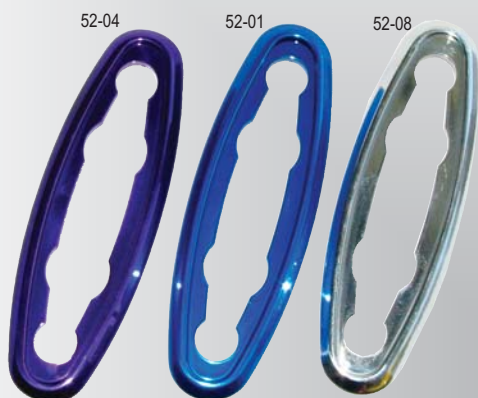
5600POP-UP CLEAT 6"

5213PLASTIC WATERPROOFING CUPS FOR SLIM PULL-UP CLEAT 4.5 INCH

5313PLASTIC WATERPROOFING CUPS FOR SLIM PULL-UP CLEAT 6 INCH

5413PLASTIC WATERPROOFING CUPS FOR POP UP CLEATS 4.5"

5613PLASTIC WATERPROOFING CUPS FOR POP UP CLEATS 6"



PART # DESCRIPTION

52BEZEL SLIM PULL-UP CLEAT 4.5"

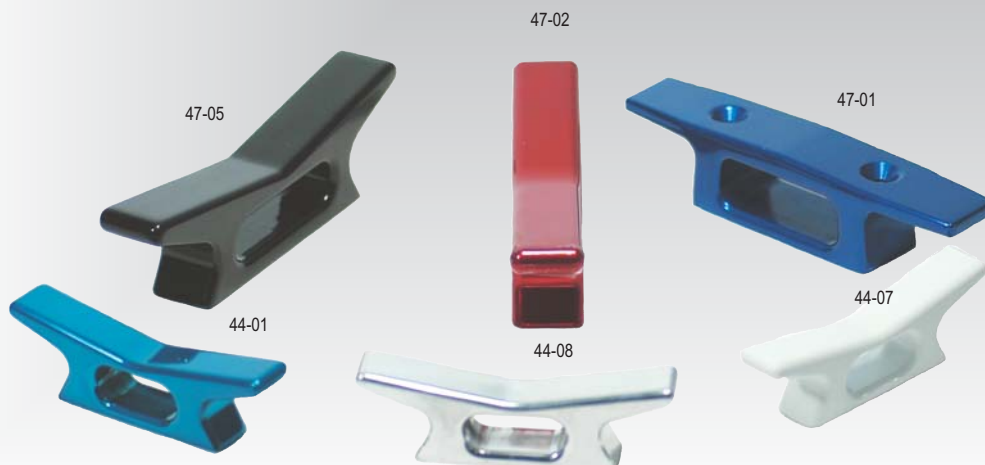
53BEZEL SLIM PULL-UP CLEAT 6"

54BEZEL POP-UP CLEAT 4.5"

56BEZEL POP-UP CLEAT 6"

Color Code:

Add to Part # 01-Blue, 02-Red, 03-Teal, 04-Purple, 05-Black, 06-Yellow, 07-White, 08-Chrome, 09-Gold



PART # DESCRIPTION

44SMALL DOCK CLEAT - STUDD 4"

47LARGE DOCK CLEAT - STUDD 6"

Color Code:

Add to Part # 01-Blue, 02-Red, 03-Teal, 04-Purple, 05-Black, 06-Yellow, 07-White, 08-Chrome, 09-Gold

WARNING SYSTEMS & LIGHTS

9501



9502

9508



Warning Systems

PART # .DESCRIPTION

9512ALARM 97 DECIBEL

9514ALARM 97 DECIBEL PANEL MOUNT

9501LOW PRESSURE SWITCH (NORMALLY CLOSED) 1/8 NPT 4.5 - 7.5 PSI

9502LOW PRESSURE SWITCH (NORMALLY OPEN) 1/8 NPT 10 PSI

9504LOW PRESSURE SWITCH (NORMALLY OPEN) 1/8 NPT 15 PSI

9506LOW PRESSURE SWITCH (NORMALLY OPEN) 1/8 NPT 35 PSI

9500LOW PRESSURE SWITCH (NORMALLY OPEN) 1/8 NPT 4 PSI

9510BRIGHT RED WARNING LIGHT PANEL MOUNT LENS 1 INCH

9508BRIGHT RED WARNING LIGHT PANEL MOUNT LENS 1/2 INCH

9516TEMPERATURE SWITCH WARNING ON AT 190 F-210 F

9518TEMPERATURE SWITCH WARNING ON AT 245 F-265 F

9514



9516



9512



Bow and Stern Lights

ART # .DESCRIPTION

5900POP-UP BOW LIGHT WHITE

5901POP-UP BOW LIGHT STAINLESS STEEL

5902POP-UP BOW LIGHT BLACK

5903POP-UP STERN LIGHT BLACK

5904POP-UP STERN LIGHT WHITE

5910PLASTIC CUPS FOR ALL POP-UP BOW LIGHTS

61BEZEL POP-UP LIGHTS

Color Code for Part #61 Only:

Add to Part # 01-Blue, 02-Red, 03-Teal, 04-Purple, 05-Black, 06-Yellow, 07-White, 08-Chrome, 09-Gold, 10-Platinum

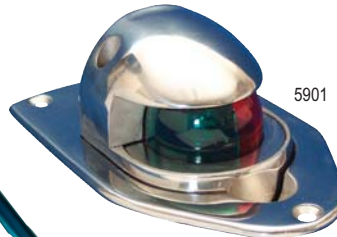
5900



5903



5901



5910



61-03



GAUGE DECK MOUNTS

PART # DESCRIPTION

505MOUNTING CUP FOR 3 3/8" GAUGE - BLACK

605MOUNTING CUP FOR 2" GAUGE SHALLOW - BLACK

705MOUNTING CUP FOR 2" GAUGE DEEP - BLACK

705



605



505



MECHANICAL INDICATORS

Easy to read mechanical indicator of drive and tab positions. Built with all non corrosive aluminum and plastic materials. Adaptable to any actuator with a 3 1/4" throw.

- New LED backlighting for better night viewing.
- Available in 1 - 5 slot configurations - 1 to 3 slot panel size is 3" x 5 3/4" - 4 and 5 slot panel size is 4 3/4" x 5 3/4"
- Uses standard 33C series cables
- Rims are available in a variety of UV protected, metallic powder-coated colors.



WHT DIAL	BLK DIAL	PLATINUM DIAL	DESCRIPTION
200	210	237	Mechanical Indicator 1 Drive - Mercury
201	211	NA	Mechanical Indicator 2 Drives - Mercury
202	212	NA	Mechanical Indicator 3 Drives - Mercury
203	213	240	Mechanical Indicator 2 Tabs
204	214	241	Mechanical Indicator 1 Drive/2 Tabs - Mercury
205	215	242	Mechanical Indicator 2 Drives/2 Tabs - Mercury
206	216	NA	Mechanical Indicator 3 Drives/2 Tabs - Mercury

Color Code

Add to Part # 01 - Blue, 02 - Red, 03 - Teal, 04 - Purple, 05 - Black, 06 - Yellow, 07 - White, 08 - Chrome, 09 - Gold, 10 - Platinum

TRIM PANELS

- Use side by side or stacked
- Switches are waterproof
- Two-switch panel size is 3" X 3"
- Three-switch panel size is 3 3/4" X 3"
- Available in a variety of UV protected, metallic powder-coated colors or polished stainless steel.

PART# DESCRIPTION - TRIM PANELS

251	PANEL - 2 DRIVES - WHITE SWITCHES
261	PANEL - 2 DRIVES - BLACK SWITCHES
252	PANEL - 2 TABS - WHITE SWITCHES
262	PANEL - 2 TABS - BLACK SWITCHES
253	PANEL - 3 DRIVES - WHITE SWITCHES
263	PANEL - 3 DRIVES - BLACK SWITCHES
254	PANEL - 2 DRIVES 1 OVERRIDE - WHITE SWITCHES W/RED OVERRIDE
264	PANEL - 2 DRIVES 1 OVERRIDE - BLACK SWITCHES W/RED OVERRIDE
255	PANEL - 1 DRIVE 2 TABS - WHITE SWITCHES
265	PANEL - 1 DRIVE 2 TABS - BLACK SWITCHES
256	PANEL - 2 TABS 1 OVERRIDE - WHITE SWITCHES W/RED OVERRIDE
266	PANEL - 2 TABS 1 OVERRIDE - BLACK SWITCHES W/RED OVERRIDE

Color Code: Add to Part # 01 - Blue, 02 - Red, 03 - Teal, 04 - Purple, 05 - Black, 06 - Yellow, 07 - White, 08 - Polished, 09 - Gold, 10 - Platinum



NEW! Stainless Steel Construction

- * Rubber gaskets direct water where it's needed most
- * Skirt on outer edge of hydro cool directs a solid sheet of water down the sides of the bearing tower.
- * Unique design pick-up tube is canted forward and rolled under for maximum flow and is unaffected by excessive trim angle.
- * Water flow starts as soon as boat gets on plane and increases as speed of boat increases.
- * Works with all back mounted external steering systems and most systems using wing plates.
- * The unique pick-up tube and the rubber seals together make it possible to get better cooling using only one pick-up versus twice the drag of systems using two pick-ups.
- * You can use an alternate water source such as a thru hull pick-up. T-fitting off of sea pump or intercooler discharge hose. Step V-bottoms, Cats, Tunnels, or any boat with low-water pick-ups or high X-dimensions DO NOT have sufficient flow at the cavitation plate at higher speeds because the cavitation plate rises too high off the surface of the water.



PART # DESCRIPTION

9000HYDRO COOL STAINLESS STEEL OUTDRIVE COOLERS FOR BRAVO DRIVE SMOOTH TOP COVERS
 9001HYDRO COOL STAINLESS STEEL OUTDRIVE COOLERS FOR BRAVO FINNED TOP COVERS W/O MERC. ITS
 9002HYDRO COOL STAINLESS STEEL OUTDRIVE COOLERS FOR BRAVO FINNED TOP COVERS WITH MERC. ITS
 Color Code: Add to Part # 05 - Black and 08 - Polished Stainless Steel - No Upcharge
 Color Code: Add to Part # 01 - Blue, 02 - Red, 03 - Teal, 04 - Purple, 06 - Yellow, 07 - White

*FOR BRAVO 3 DRIVES, REQUEST A LONGER HOSE.
 *FOR ALPHA DRIVES, CALL FOR AVAILABILITY

SWITCHES

PART # DESCRIPTION

9402MARINE IGNITION SWITCH - 3 POSITION
 8800FLAT BEZEL 3/4 I.D. x 1 5/16" O.D. - FOR IGNITION SWITCHES
 Color Code for 8800 bezel. Add to Part # 01 - Blue, 02 - Red, 03 - Teal, 04 - Purple, 05 - Black, 06 - Yellow, 07 - White, 08 - Chrome, 09 - Gold, 10 - Platinum

9300 TOGGLE SWITCH MOMENTARY ON/OFF SINGLE POLE
 9302 TOGGLE SWITCH MOMENTARY ON/OFF/MOMENTARY ON SINGLE POLE
 9301 TOGGLE SWITCH ON/OFF SINGLE POLE
 9303 TOGGLE SWITCH ON/OFF/ON SINGLE POLE
 8785FLAT BEZEL THREADED 1" O.D. FOR TOGGLE SWITCHES
 Color Code for 8785 bezel. Add to Part # 01 - Blue, 02 - Red, 03 - Teal, 04 - Purple, 05 - Black, 06 - Yellow, 07 - White, 08 - Chrome, 09 - Gold, 10 - Platinum

9310ROCKER SWITCH MOMENTARY ON/OFF SINGLE POLE BLACK
 9810ROCKER SWITCH MOMENTARY ON/OFF SINGLE POLE WHITE
 9312ROCKER SWITCH MOMENTARY ON/OFF/MOMENTARY ON DOUBLE POLE BLACK
 9812ROCKER SWITCH MOMENTARY ON/OFF/MOMENTARY ON DOUBLE POLE WHITE
 9311ROCKER SWITCH MOMENTARY ON/OFF/MOMENTARY ON SINGLE POLE BLACK
 9811ROCKER SWITCH MOMENTARY ON/OFF/MOMENTARY ON SINGLE POLE WHITE

9320ROCKER SWITCH ON/OFF SINGLE POLE BLACK
 9820ROCKER SWITCH ON/OFF SINGLE POLE WHITE

9307ROCKER SWITCH ON/OFF LIGHTED DOUBLE POLE BLACK
 9807ROCKER SWITCH ON/OFF LIGHTED DOUBLE POLE WHITE
 9306ROCKER SWITCH ON/OFF LIGHTED SINGLE POLE BLACK
 9806ROCKER SWITCH ON/OFF LIGHTED SINGLE POLE WHITE
 9308ROCKER SWITCH ON/OFF/ON LIGHTED SINGLE POLE BLACK
 9808ROCKER SWITCH ON/OFF/ON LIGHTED SINGLE POLE WHITE
 9309ROCKER SWITCH ON/OFF/ON LIGHTED DOUBLE POLE BLACK
 9809ROCKER SWITCH ON/OFF/ON LIGHTED DOUBLE POLE WHITE

9400 RUBBER BOOT BLACK FOR TOGGLE SWITCH
 9401 RUBBER BOOT WHITE FOR TOGGLE SWITCH



Ignition



Toggle

- * Nickel-plated brass
- * Optional white or black rubber boot with 1/2" cutout size.
- * 25 amps at 12 VDC



Rocker

- * Dust and moisture protected
- * Snap in bracket mounting hole (.830"x1.450")
- * 20amps at 12 VDC
- * 1/4" push on connectors



11416 Kiley Drive Unit E Huntley, IL 60142
call: (224) 569-2900 or fax: (224) 569-2903
www.gaffrigperformance.com